



37 Walker Street LAVENDER BAY, NSW

4 1 3 3

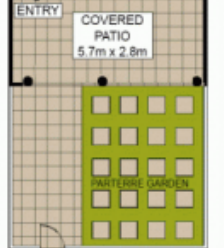
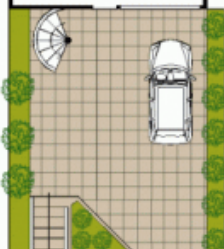
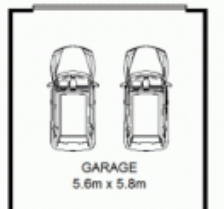
Exceptional Grand Victorian Residence

Free standing on the North side of this exclusive, tightly held enclave of exceptional Victorian terraces is this meticulously restored home of one of Sydney's leading interior designers. Cleverly blending refined period architectural features with premium quality, modern and sophisticated light filled flowing spaces.



Ivan Resnekov

0411 500 240



ENTRY LEVEL



SECOND LEVEL

LAND SIZE : 265m² Approximately
INTERNAL LIVING AREA: 267m² Approximately
BALCONY AREAS : 59m² Approximately
GARAGE AREA : 32m² Approximately



TOP LEVEL



Scale shown in metres. All dimensions herein are approximate and gathered from sources believed to be reliable. Whilst every effort is made for the accuracy of our floor plans, interested parties should rely on their own enquires. Floor Plans by Industrie Media | industriemedia.tv



37 Walker Street, Lavender Bay

