



6 Attunga Road ROSEVILLE CHASE, NSW



First Time Offered Large, Private Family Estate on 1555sqm

Situated in an exclusive enclave of 8 houses this original family home has been meticulously maintained and is for sale for the first time.

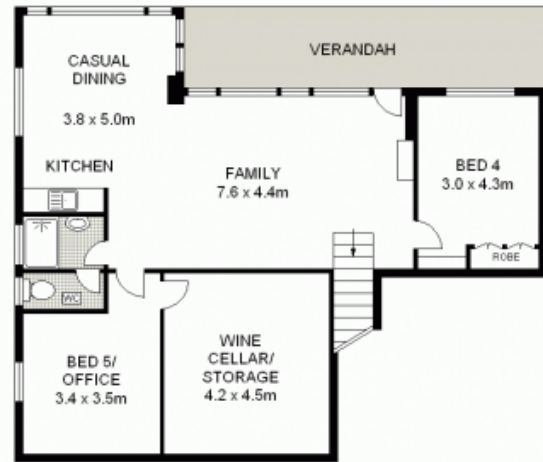
Built in 1957, this double brick residence enjoys expansive 180 degree views of Garigal National Park, east Lindfield and beyond, plus unsurpassed privacy, accommodation and level access.

Stone Real Estate -

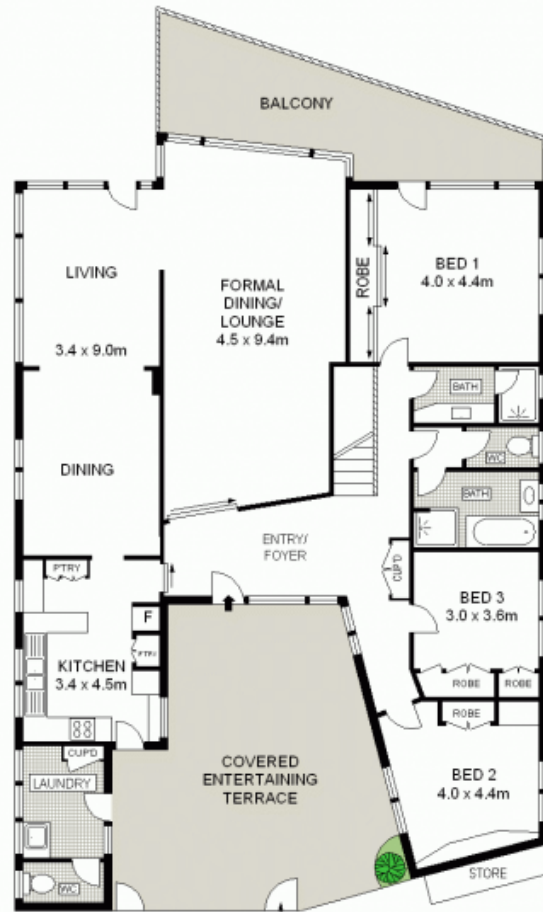
Head Office



SITE PLAN (NOT TO SCALE)



LOWER LEVEL



GROUND LEVEL



APPROX. LAND AREA : 1555 m²
 APPROX. INTERNAL AREA : 183 m²



PLANS SHOWN ONLY INDICATIVE. Dimensions are approximate. All information contained herein is generated from sources we believe to be reliable. However, we cannot guarantee its accuracy and interested persons should rely on their own inquiries.

6 ATTUNGA ROAD, ROSEVILLE CHASE