



21 Iluka Road MOSMAN, NSW



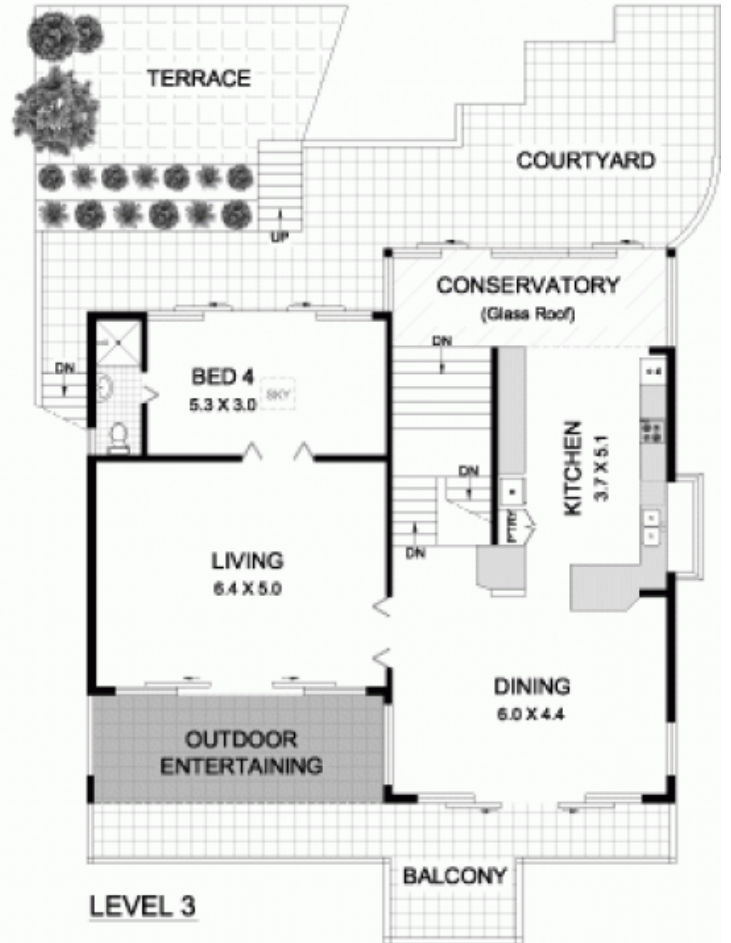
## Majestic Opportunity in Clifton Gardens

Move in and enjoy spacious harbourside living immediately or bring your builder to capitalize on the opportunity.

Stone Real Estate -

Head Office

SITE PLAN (at reduced scale)



LEVEL 3



DOUBLE GARAGE



LEVEL 1



LEVEL 2



This plan is for illustrative purposes only and dimensions are approximate. It does not constitute part of any legal document or commercial contract for the sale or lease of this property.

METRO FLOORPLANS  
0418 223 433



21 ILUKA ROAD  
MOSMAN