



25/93 Avenue Road MOSMAN, NSW

2 

1 

Caf? Culture Meets Sundrenched Living

Boasting a North facing aspect with elevated district views, this neat-as-a pin strata apartment is conveniently located within a short stroll to cafes, Mosman Village shopping and Mosman Ferry Wharf.

- * Low maintenance security block
- * Open plan, north facing living areas flow to private balcony
- * Elevated and leafy district views
- * Internal laundry
- * rental ready: new carpet and paintwork
- * Bus stop close by
- * Ideal as a first home or investment

Blue Chip buying!

Area 73 sqm approx

Rent return approx \$490-\$510 per week

Strata \$894.80 p.q. Council \$307.54 p.q. Water \$171.96 p.q. (all approx.)

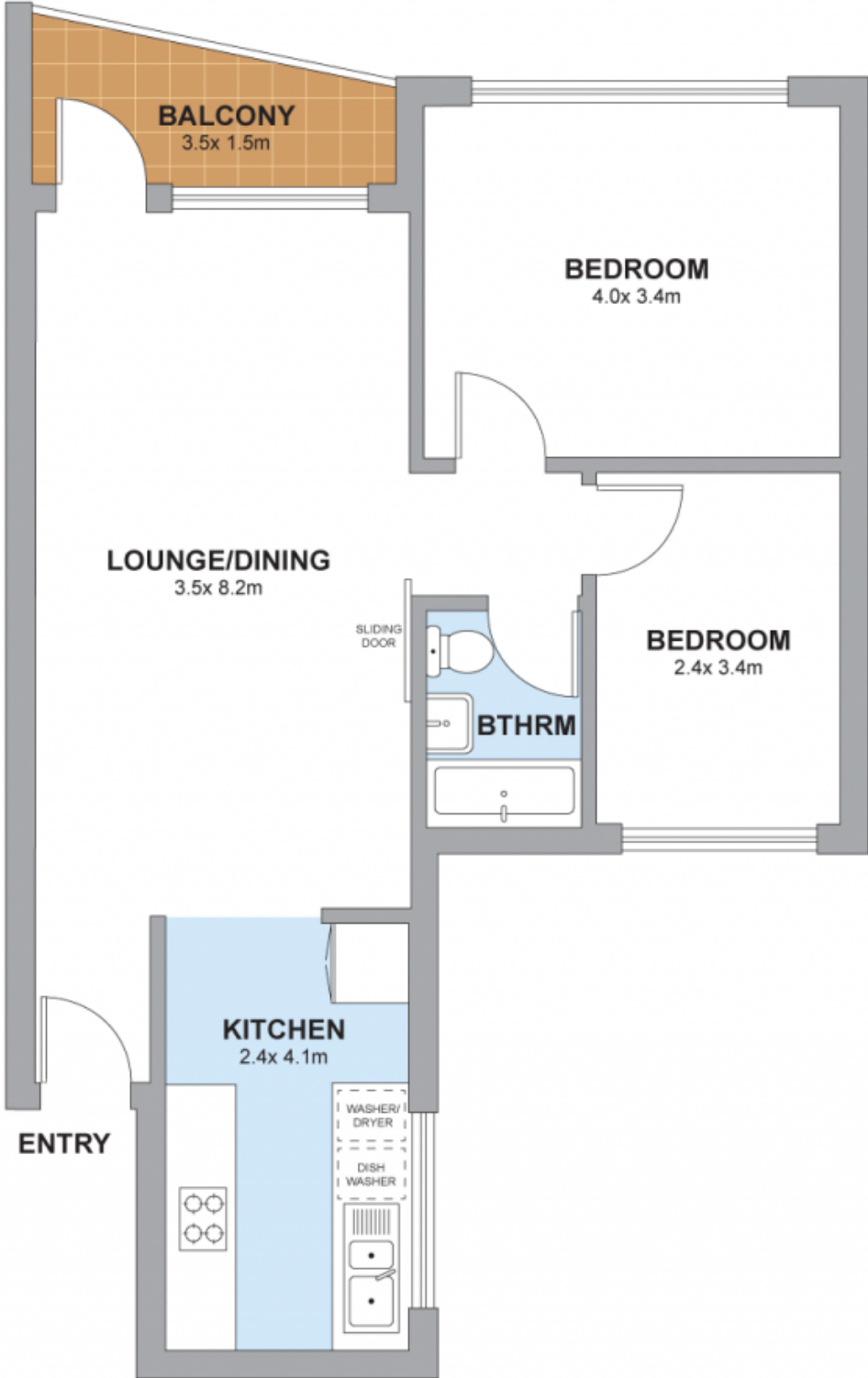
Strata Report available upon request



Ivan Resnekov

0411 500 240

25/93 AVENUE ROAD MOSMAN



Scale in metres. Measurements are approximated only. All information contained herein is obtained from sources we believe to be accurate. We cannot guarantee its accuracy. Interested persons should make and rely on their own enquiries.

