



2/36 Milson Road CREMORNE POINT, NSW

2

1

Under instructions from NSW Trustee and Guardian

Original Waterfront Reserve apartment. This solid and spacious 89 square metre apartment is ideally located on Cremorne Point.

- * uninterrupted main Harbour views
- * small, character 1920's building of 6 apartments
- * 200m to Maccallum harbourside swimming pool
- * 10 minute stroll to Cremorne ferry Wharf

Superb investment or home!

Strata Levies: approx \$1074 p.q.

Council Rates: approx \$241 p.q.

Water Rates: approx \$171 p.q.

Price:

Auction



Ivan Resnekov

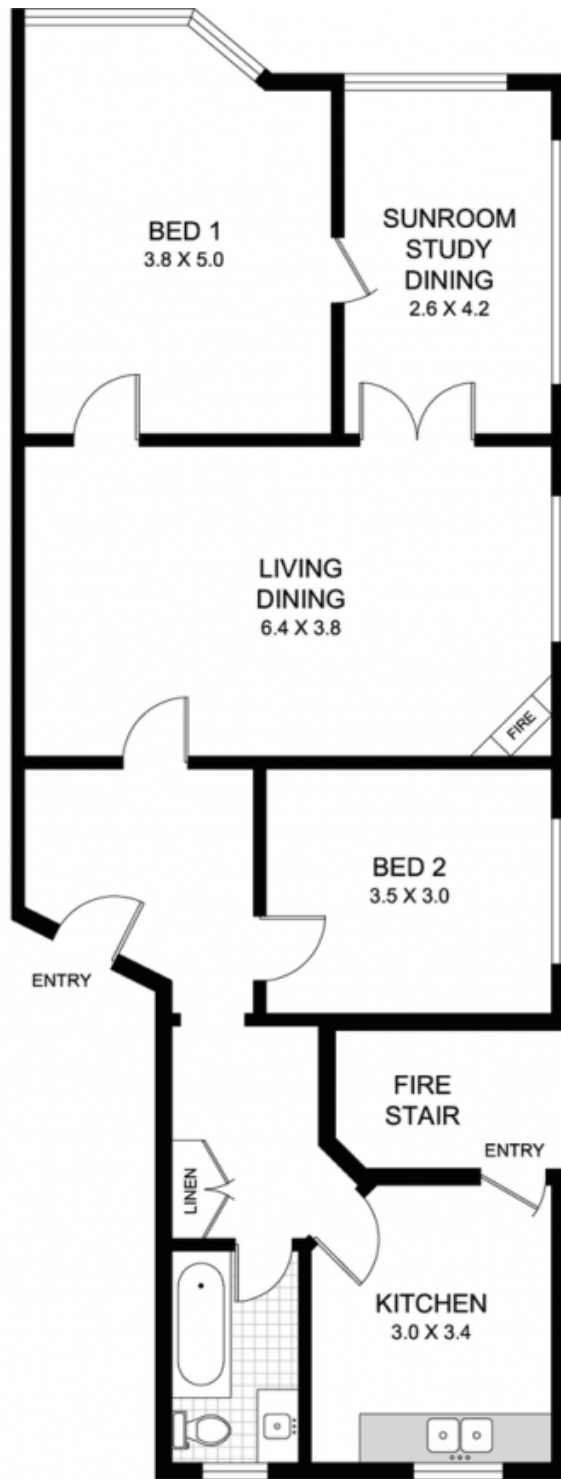
0411 500 240



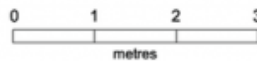
This plan is for illustrative purposes only and dimensions are approximate. It does not constitute part of any legal document or commercial contract for the sale or lease of this property.



**2/36 MILSON ROAD
CREMORNE POINT**



This plan is for illustrative purposes only and dimensions are approximate. It does not constitute part of any legal document or commercial contract for the sale or lease of this property.



2/36 MILSON ROAD
CREMORNE POINT