

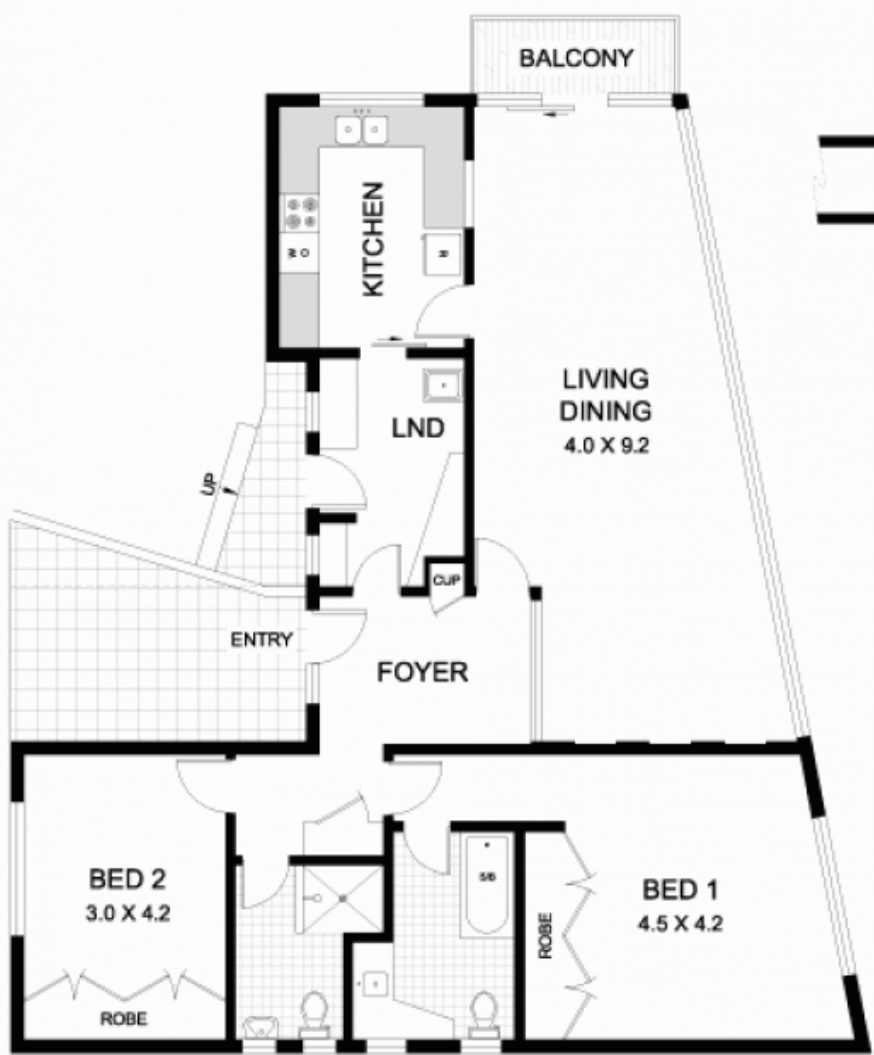
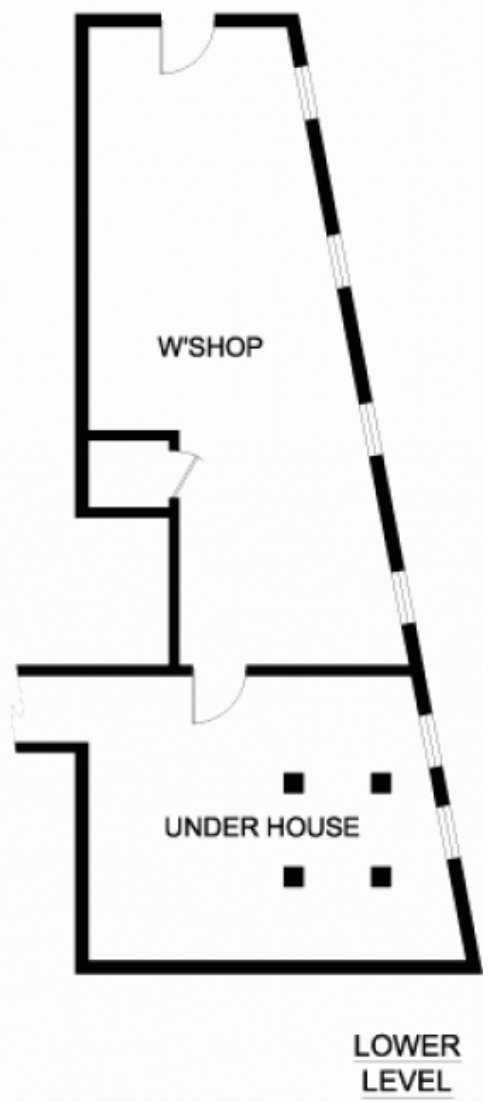
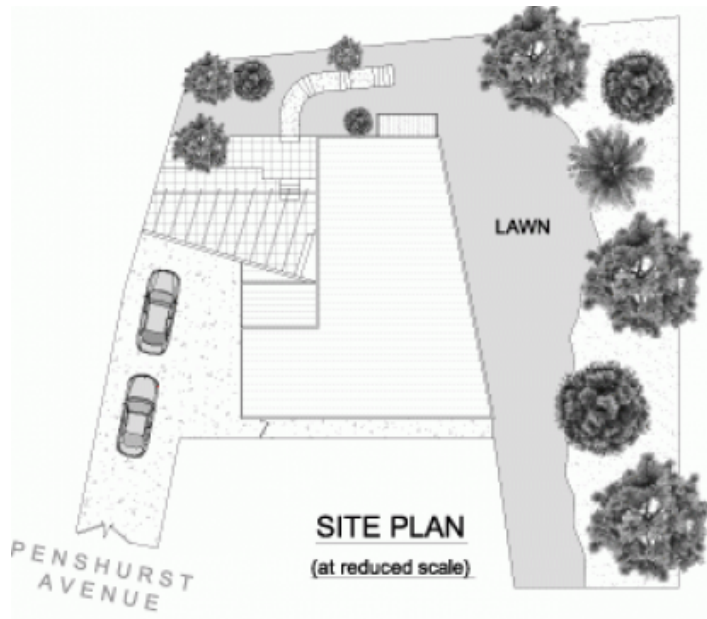
12 Penshurst Avenue NEUTRAL BAY, NSW



### Potential Packed Freestanding Home, Deceased Estate

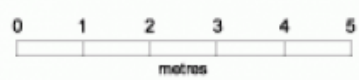
With ideal North East aspect and blue chip end of cul-de-sac location, only a 5 minutes stroll to the ferry wharf, a golden opportunity presents: improve the current home, develop the very large basement level or perhaps add a storey. Or create your own dream home(s) ..subject to council approval.

Stone Real Estate -  
Head Office



This plan is for illustrative purposes only and dimensions are approximate. It does not constitute part of any legal document or commercial contract for the sale or lease of this property.

METRO FLOORPLANS  
0418 223 433



**12 PENSURST AVENUE**  
**NEUTRAL BAY**