

48 Carabella Street KIRRIBILLI, NSW

5

4

2

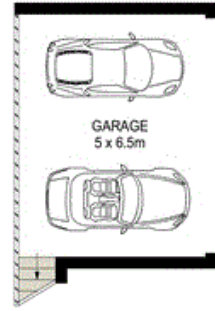
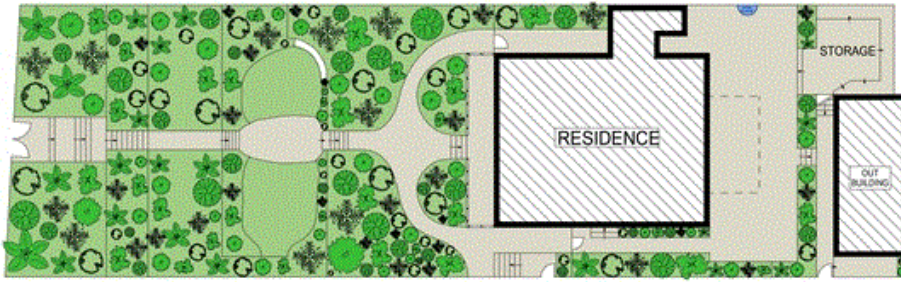
'Burnleigh' c1875 - One of Kirribilli's Most Significant Homes

This landmark sandstone Victorian home with a much sought after north east aspect is situated on over 800sqm of beautifully landscaped prime Kirribilli real estate.

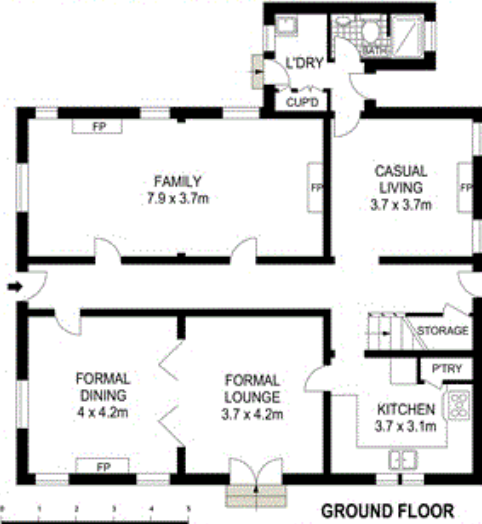
Price:

AUCTION

Stone Real Estate -
Head Office



SITE PLAN (NOT TO SCALE)



GROUND FLOOR

LEVEL ONE



Scale in metres. Indicative only. Dimensions are approximate. All information contained herein is gathered from sources we believe to be reliable. However we cannot guarantee its accuracy and interested persons should rely on their own enquiries.

48 Carabella Street, Kirribilli

