

1/41 Moruben Road MOSMAN, NSW



Huge Townhouse-Style Apartment on Balmoral Slopes with Harbour Views

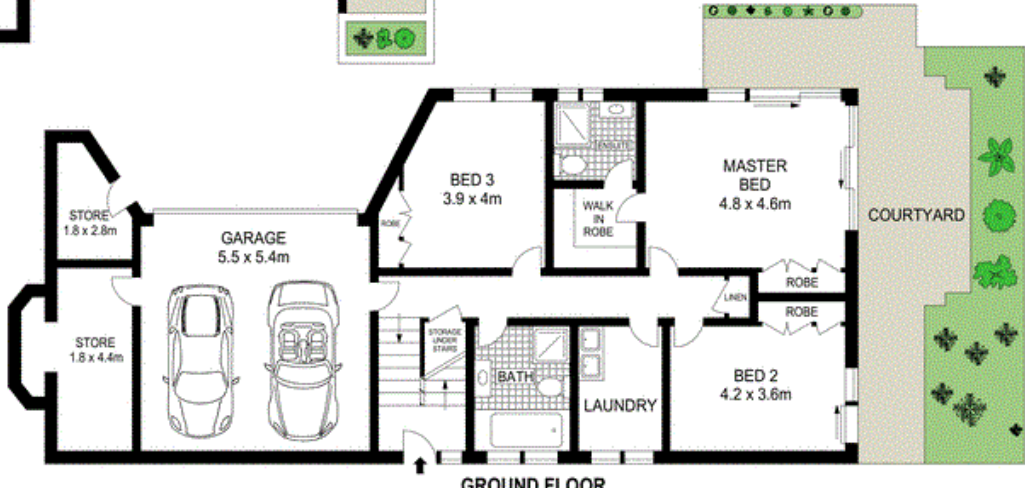
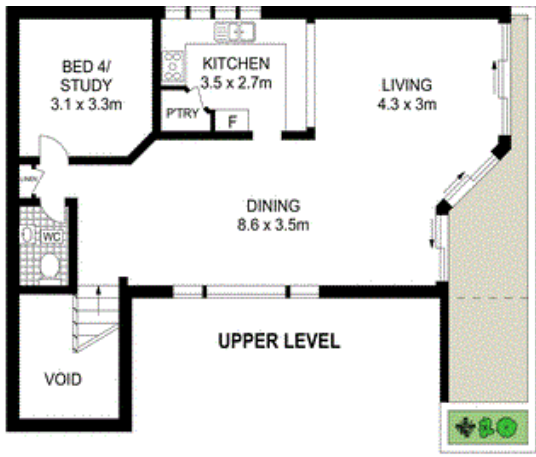
One of only four exclusive residences, this split level apartment offers a generous 265sqm approx. on title including a balcony, private wraparound courtyard and automatic double garage with direct internal access. Featuring a north east aspect and boasting views to Middle Harbour, North Head and beyond.

Price:

AUCTION

Stone Real Estate -

Head Office



Scale in metres. Indicative only. Dimensions are approximate. All information contained herein is gathered from sources we believe to be reliable. However we cannot guarantee its accuracy and interested persons should rely on their own enquiries.



1/41 Moruben Road, Mosman

