



42B Botanic Road MOSMAN, NSW

3

2

3

### "BEACH WALK" Luxury Penthouse 100m to the Beach

This sumptuous whole-floor penthouse presents an exceptionally rare opportunity in an exclusive setting. Destined to set a new local benchmark in low maintenance luxury living and selling now off the plan, this whole floor apartment is one of only two in the building, with natural bushland reserve opposite, renowned Esplanade restaurants just moments away and superb cafes and the sands of glorious Balmoral Beach literally footsteps from the front door.

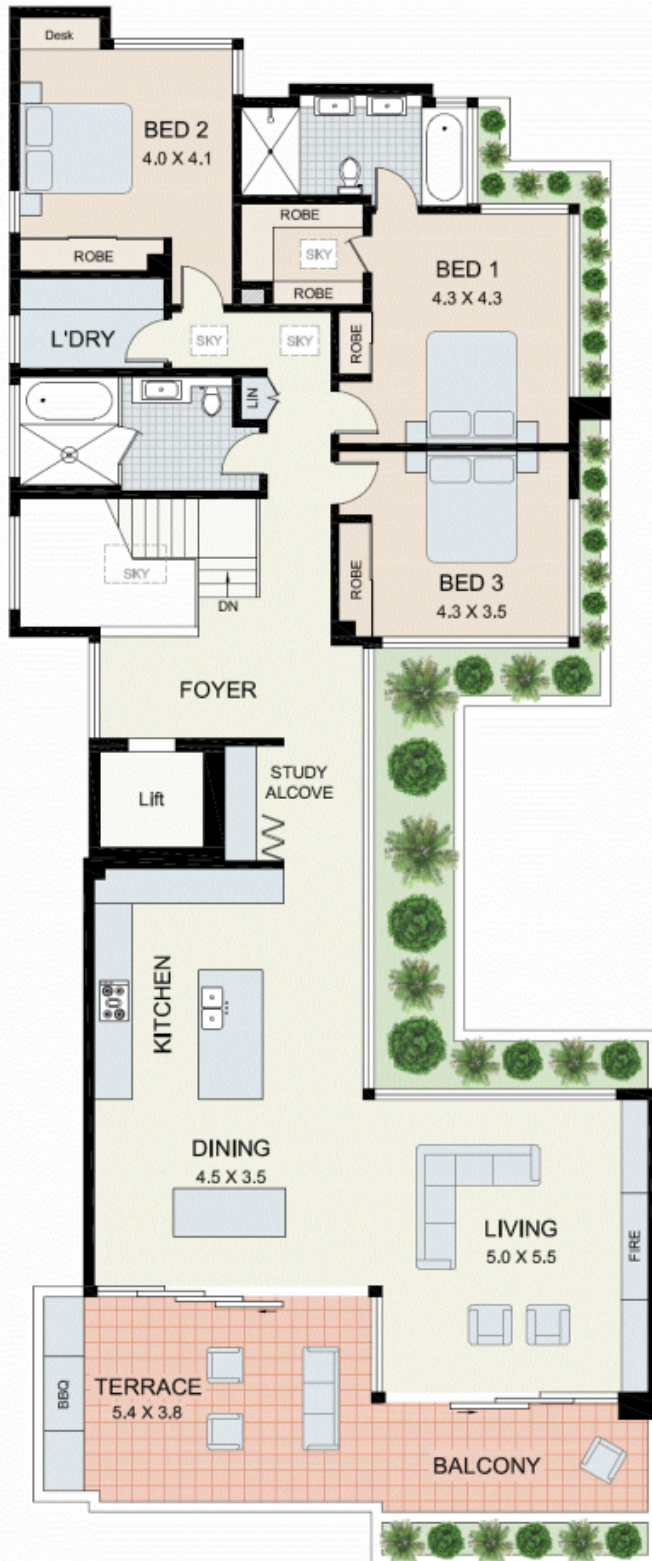
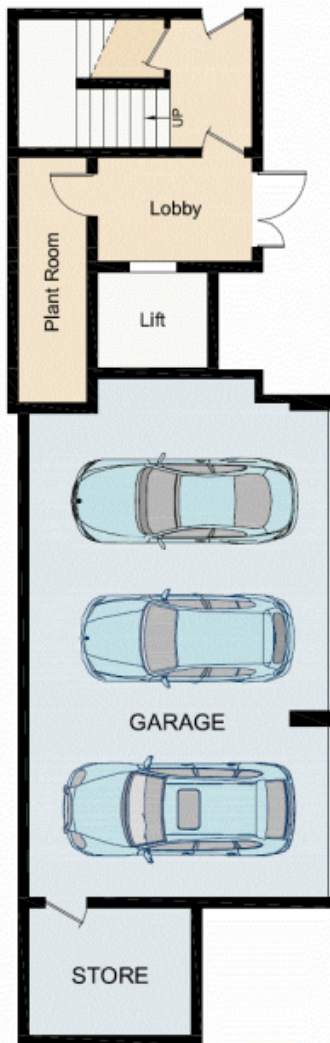
Price:

RECENT SALES



**Ivan Resnekov**

0411 500 240



This plan is for illustrative purposes only and dimensions are approximate. It does not constitute part of any legal document or commercial contract for the sale or lease of this property.



**42B BOTANIC ROAD  
MOSMAN**