



10/6 Mandolong Road MOSMAN, NSW

3 

2 

2 

Huge North Facing Residence with Harbour Views

Superlative Harbour views to North Head and the shimmering ocean beyond.

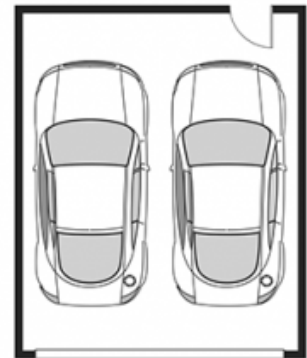
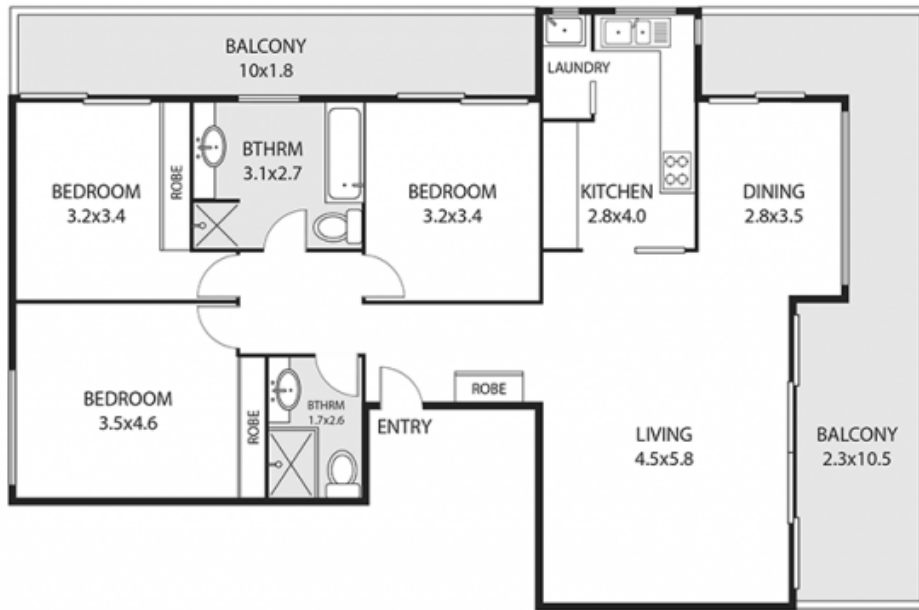
Price:

AUCTION

Stone Real Estate -

Head Office

BALMORAL - 10/6 Mandolong Road



DOUBLE LUG
5.0x6.1



Plans are for presentation purposes only and are not part of any legal document or title and should not be used as a sole reference. Interested parties should make their own enquiries using other sources. Measurements are approximate. We do not guarantee or give any warranty as to the accuracy provided. Interested parties must rely on their own inquiries.

