



5/68 Bradleys Head Road MOSMAN, NSW



Spectacular City & Harbour Views

This lovely home has a magical backdrop whilst relaxing from the living and dining areas. Recently fully renovated, it features 2 spacious bedrooms both with BIW's and bathed in natural sunlight. Positioned in one of Mosman's premier locations where buses are at your doorstep, Mosman Village cafes and restaurants are only a 5 min stroll away with Balmoral beach 15 min away.

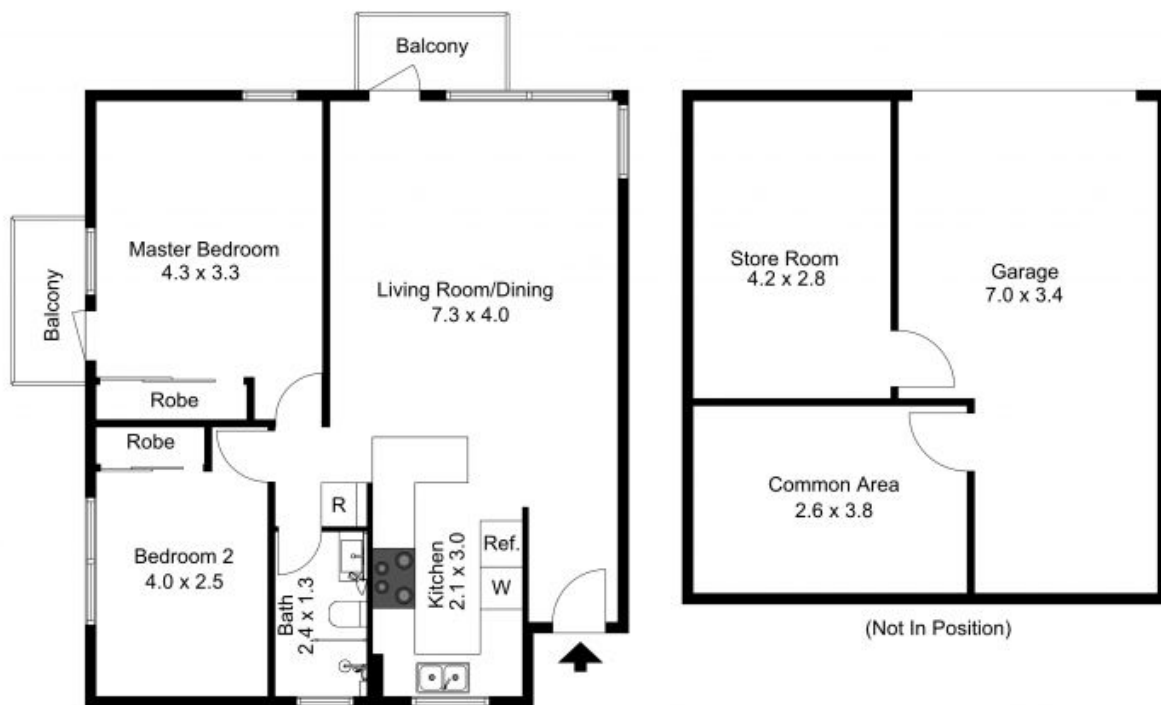
Price:

RECENT SALES



Eddie Tremolada

0411 744 478



The floor plan is not to scale; measurements are indicative and in metres. Exterior elements are not in position. Plans should not be relied on. Interested parties should make and rely on their own enquiries.

Produced by **DIAKRIT**



The floor plan is not to scale; measurements are indicative and in metres. All features included in this 3D plan are for inspiration purposes only. This is not an exact replica of the property or the position of exterior elements. Plans should not be relied on. Interested parties should make and rely on their own enquiries.

Produced by **DIAKRIT**