



167B Seaforth Crescent SEAFORTH, NSW

4 

3 

2 

SOLD SOLD SOLD

Absolutely breathtaking 180° water views are enjoyed throughout this sun-filled secluded and contemporary waterfront residence. Privately nestled within an exclusive enclave, overlooking Powderhulk Bay, cascading over three levels on a premier 854m2 parcel of land.

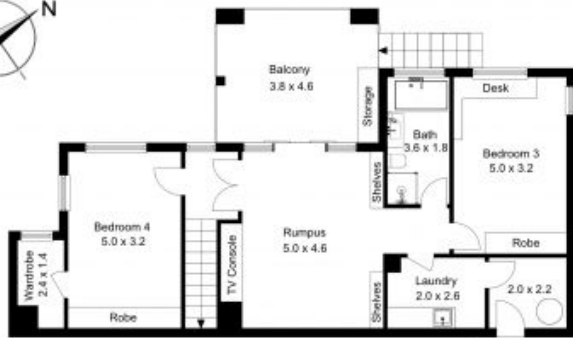
Price:

Expressions of interest 19/3/21 if not sold prior



Andrew Thomas

0421 281 234



Ground Level



Level 2



Level 1

167b Seaforth Crescent, Seaforth

The floor plan is not to scale; measurements are indicative and in metres. Exterior elements are not in position. Plans should not be relied on. Interested parties should make and rely on their own enquiries.

Produced by **DIAKRIT**



Ground Level



Level 2



Level 1

167b Seaforth Crescent, Seaforth

The floor plan is not to scale; measurements are indicative and in metres. All features included in this 3D plan are for inspiration purposes only. This is not an exact replica of the property or the position of exterior elements. Plans should not be relied on. Interested parties should make and rely on their own enquiries.

Produced by **DIAKRIT**