

4/2 Bloomsbury Avenue PYMBLE, NSW



Contemporary and Spacious Town Home

This lovely recently renovated home is all class and style with no expense spared. Offering a lifestyle of convenience, yet positioned within a tranquil bushland setting.

Price:

Contact Agent

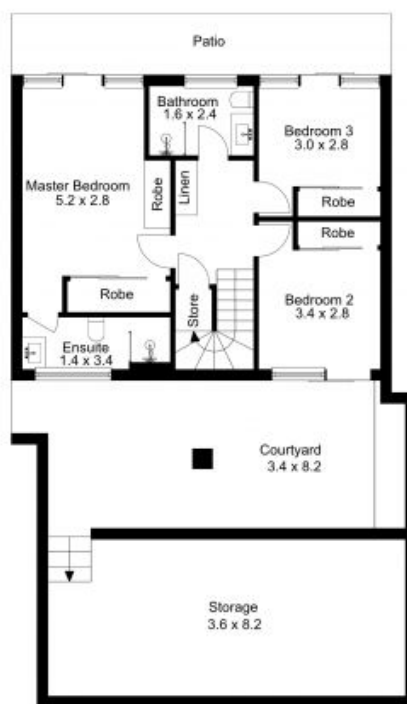


Eddie Tremolada

0411 744 478



First Floor



Ground Floor

4/2-4 Bloomsbury Avenue

The floor plan is not to scale; measurements are indicative and in metres. Exterior elements are not in position. Plans should not be relied on. Interested parties should make and rely on their own enquiries.

Produced by **DIAKRIT**



First Floor



Ground Floor

4/2-4 Bloomsbury Avenue

The floor plan is not to scale; measurements are indicative and in metres. All features included in this 3D plan are for inspiration purposes only. This is not an exact replica of the property or the position of exterior elements. Plans should not be relied on. Interested parties should make and rely on their own enquiries.

Produced by **DIAKRIT**