



67 Milson Road Cremorne Point, NSW

5

1

2

2

"Cooloobah" Merchant's Mansion Circa 1912

A rare opportunity to acquire one of Cremorne Point's most significant freestanding residences, this stately home is set on a generous, elevated block with commanding views of the Opera House, Harbour Bridge, City and Main Harbour.

The large family home boasts Federation architecture with polished timber floors, soaring ceilings, open fireplaces, ornate Art Nouveau glazed windows and covered wrap around entertaining balconies on both levels that take full advantage of the magnificent views.

Substantially upgraded and extended in the 1990's by award winning architect Paul Berkemeier, the property is being offered for the first time in over 36 years.

- * Wake to the song of birds and the full harbour panorama from the spacious master bedroom
- * Sundrenched gourmet eat-in kitchen, large enough for the whole family
- * Entertaining lounge and separate dining rooms open to the front verandah
- * Artist's studio/conservatory
- * Maccallum harbourside swimming pool and beautiful Cremorne Reserve are just across the r...

Price:

SOLD AT AUCTION



Ivan Resnekov

0411 500 240



Suzi Zadel

0411 321 771



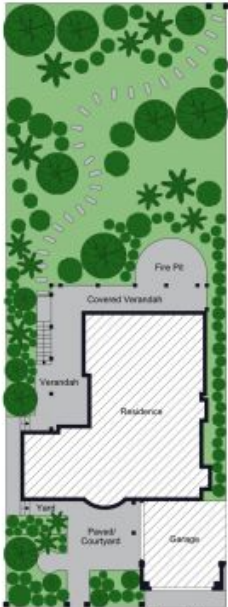
Atto (Above Studio)
Upper Floor



First Floor



Ground Floor



Site Plan

67 Milson Road, Cremorne Point

Approx. Internal Area 279 Sqm
Approx. Land Area 650 Sqm

The site plan and floor plan are not to scale, measurements are indicative and in metres. Bushes and trees are placed for illustration purposes. Plans should not be relied on. Interested parties should make and rely on their own enquiries.

Produced by DIAKRIT



Upper Floor



First Floor



Ground Floor

Approx. Internal Area 279 Sqm
Approx. Land Area 650 Sqm

67 Milson Road, Cremorne Point

The floor plan is not to scale; measurements are indicative and in metres. All features included in this 3D plan are for inspiration purposes only. This is not an exact replica of the property or the position of exterior elements. Plans should not be relied on. Interested parties should make and rely on their own enquiries.

Produced by **DIAKRIT**