



4/1A Fernhurst Avenue Cremorne, NSW

3 

2 

2 

Spectacular North-facing Water Views!

Townhouse 4 at Sutton Place has a truly enviable position, in a quiet cu-de-sac with spectacular north-facing water views, close to transport, schools, shops and amenities at Cremorne and Mosman. Approached via the front courtyard, the entrance is dominated by the sun-soaked deck and Middle Harbour views, which are also front and centre from the living room with reverse-cycle air-conditioning, dining room and kitchen. Features of the kitchen include benchtop and island in Caesarstone, Smeg cooktop, oven, microwave and range hood. The laundry has a shower and separate WC and gives access to the rear courtyard, wraparound garden and washing line.

Stairs lead to landing with linen press, separate WC and bathroom with shower and bath. Master bedroom with walk-in robe, additional built-ins, panoramic water views and reverse-cycle air-conditioning. Bedrooms 2 and 3 with built-in robes and ceiling fans.

Price:

RECENT SALES

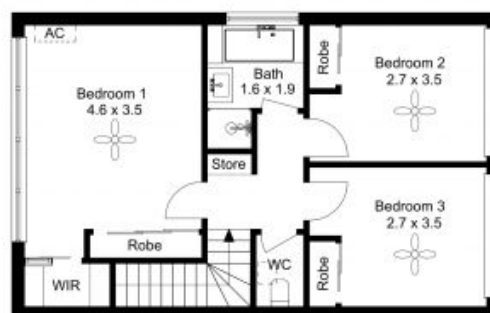


Hamish Baker

0411 741 933



(Not In Position)



Level 2



Level 1

4/1A Fernhurst Avenue, Cremorne

The floor plan is not to scale; measurements are indicative and in metres. Exterior elements are not in position.
Plans should not be relied on. Interested parties should make and rely on their own enquiries.

Produced by DIAKRIT



CENTURY 21. Living



Level 2



Level 1

4/1A Fernhurst Avenue, Cremorne

The floor plan is not to scale; measurements are indicative and in metres. All features included in this 3D plan are for inspiration purposes only.
This is not an exact replica of the property or the position of exterior elements. Plans should not be relied on. Interested parties should make and rely on their own enquiries.

Produced by **DIAKRIT**