



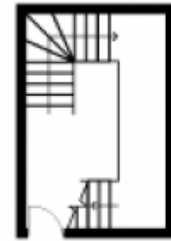
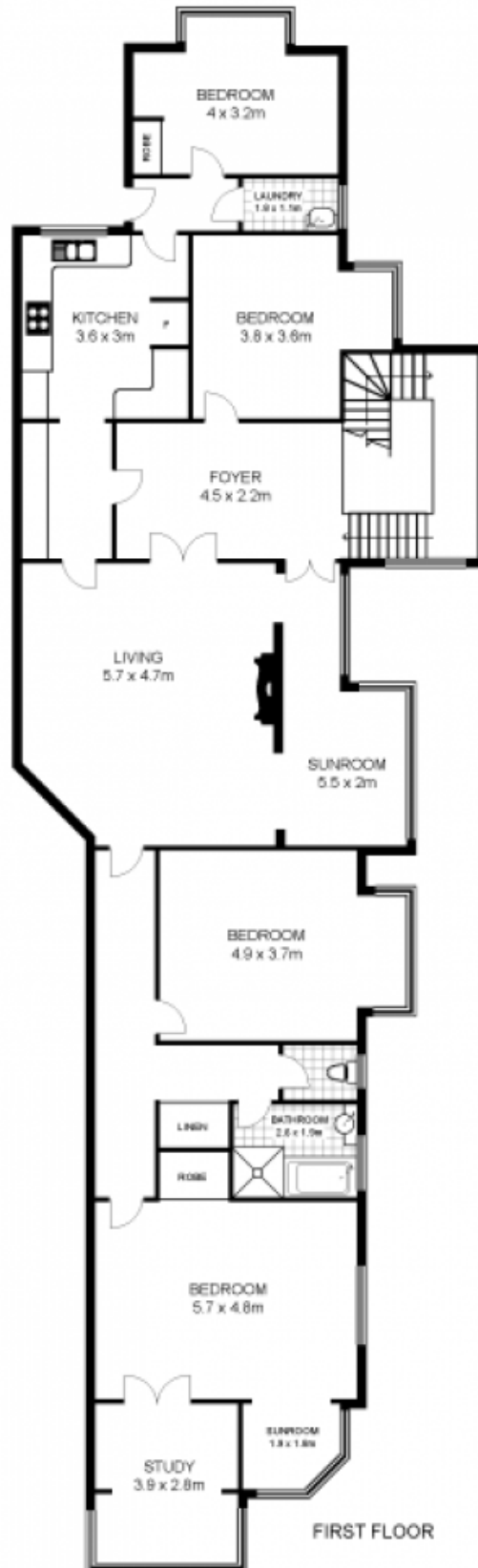
3/42 Harriette Street NEUTRAL BAY, NSW

4  1  1 

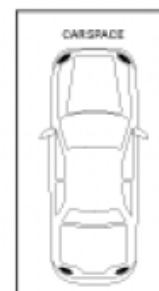
### Character, Space & Convenience

Unique opportunity to acquire an oversized apartment of more than 160sqm! Positioned at the top floor of an Edwardian building of only 4, this apartment is bursting with character, offers a very flexible floorplan and has its own majestic private entrance. This property is conveniently located just a stroll to Hayes Street ferry wharf, seconds to bus stop and close to shops. Add your personal touch to make it something truly special.

Stone Real Estate -  
Head Office



GROUND FLOOR



CARSPACE

FIRST FLOOR



NORTH

## 3/42 Harriette Street, NEUTRAL BAY

**Disclaimer:** This floor plan is intended as a guide only. Layout dimensions are approximate only. No representations or warranties of any nature whatsoever are given or intended. Any individuals using this information should always rely on their own enquiries.

[www.alchemyimaging.com.au](http://www.alchemyimaging.com.au)