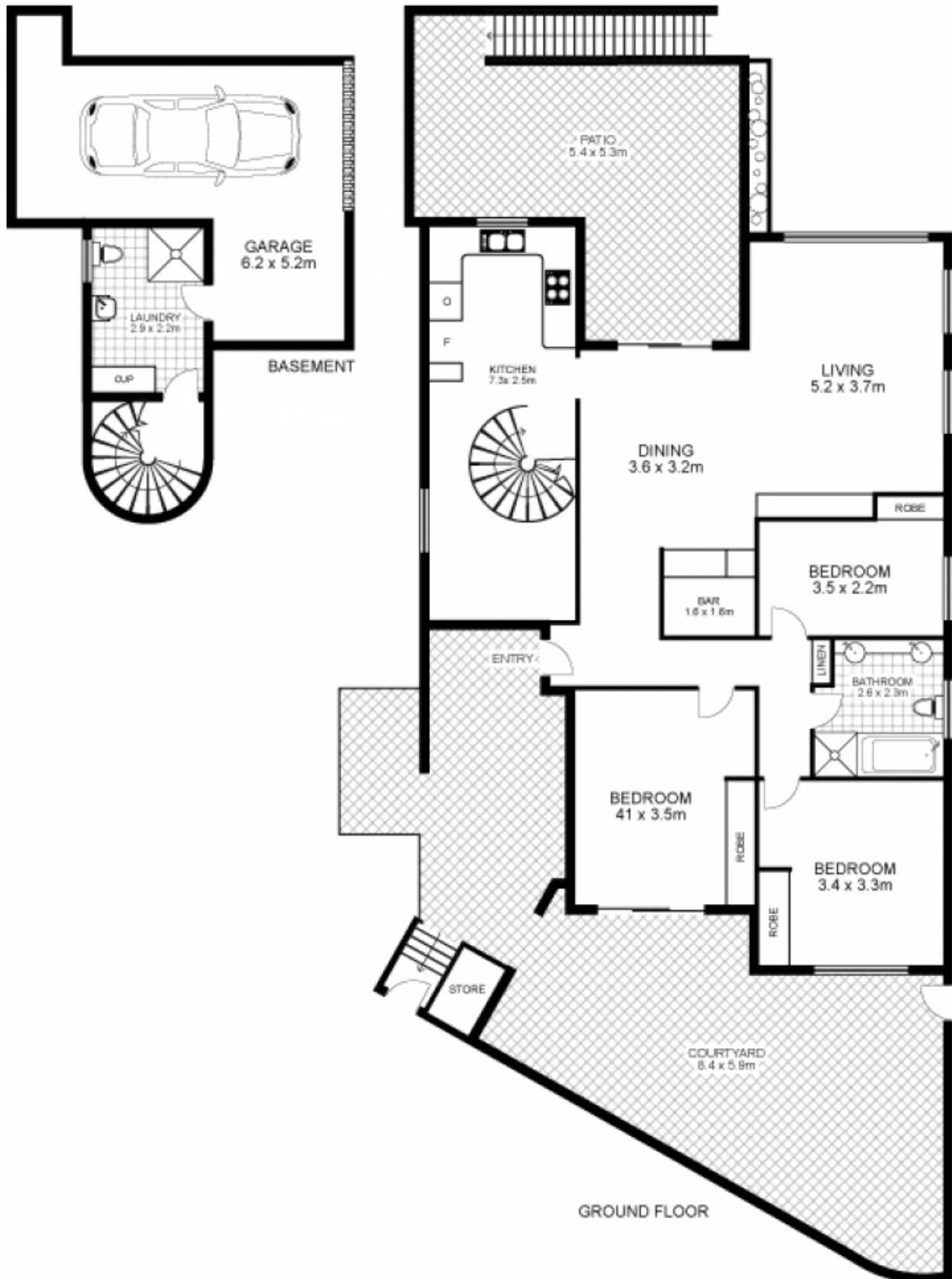


2/6 Ellalong Road CREMORNE, NSW 3  2  1 

Spacious ground floor duplex with garden on title!

Located in one of Cremorne's most popular precincts within walking distance of all amenities and easy access to city and North Sydney, this beautifully presented 3 bedroom ground floor duplex offers generous proportions, a large private entertaining sunny terrace, a landscaped courtyard and beautiful manicured gardens on title!

Stone Real Estate -
Head Office



2/6 Ellalong Road, CREMORNE

Disclaimer: This floor plan is intended as a guide only. Layout dimensions are approximate only. No representations or warranties of any nature whatsoever are given or intended. Any individuals using this information should always rely on their own enquiries.

www.alchemyimaging.com.au