



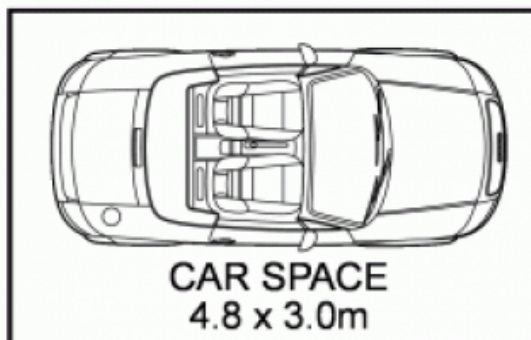
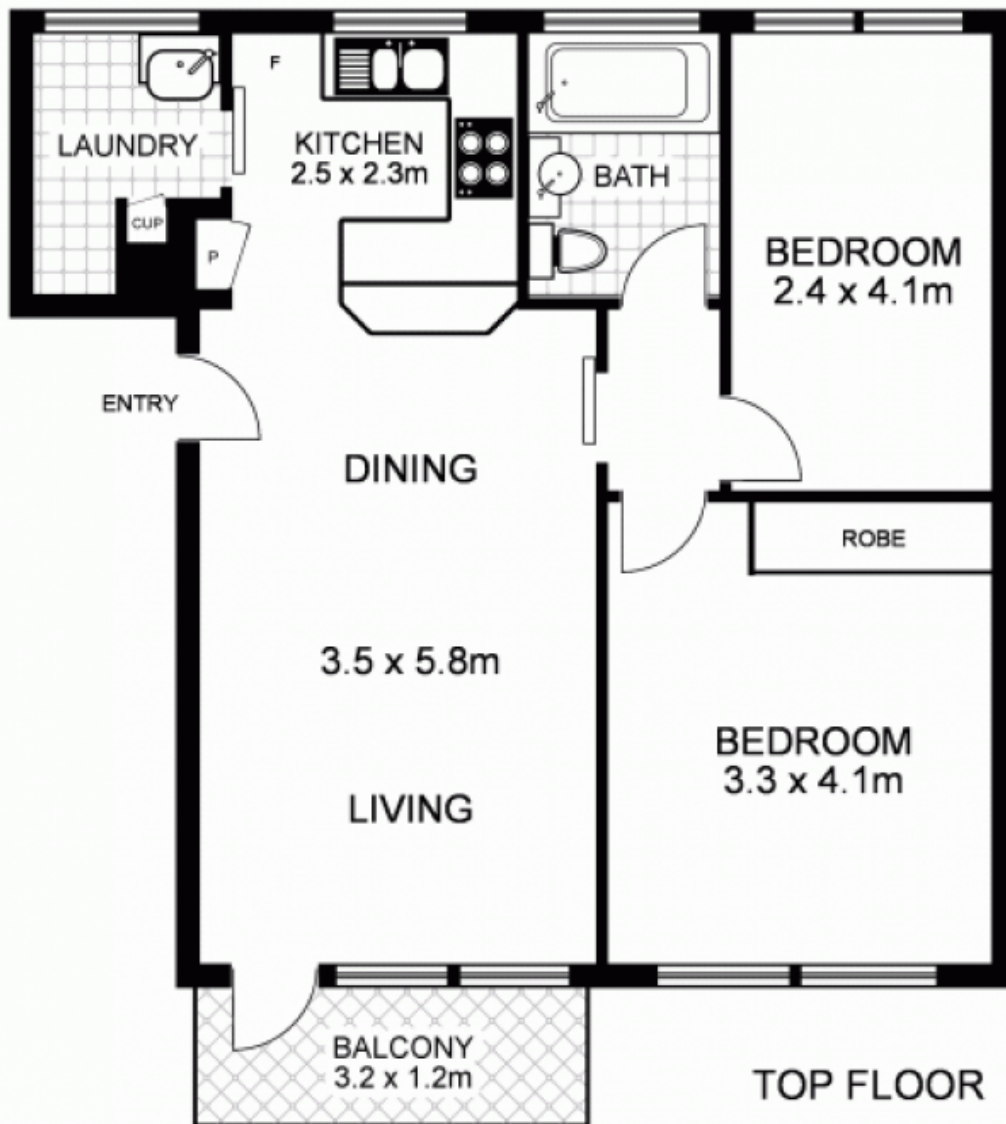
15/73 Grasmere Road CREMORNE, NSW      2      1      1

### Facing a Peaceful Reserve

A superb top floor 2 double bedroom apartment to fulfil all the desires on your wish list! Full of natural sunlight, with lovely vistas from all rooms, yet offering privacy & seclusion. This apartment has beautiful timber floors, a modern kitchen and the open plan living area is perfect for entertaining. In addition there is a renovated bathroom, spacious internal laundry plus off-street parking. All this just a short stroll away from cosmopolitan Neutral Bay restaurants, cafe's and wine bars.

Price: \$575,000

Stone Real Estate -  
Head Office



**15/73 Grasmere Road, CREMORNE**

Disclaimer: This floor plan is intended as a guide only. Layout dimensions are approximate only. No representations or warranties of any nature whatsoever are given or intended. Any individuals using this information should always rely on their own enquiries.

[www.alchemyimaging.com.au](http://www.alchemyimaging.com.au)