

3/42 Waters Road CREMORNE, NSW

3

2

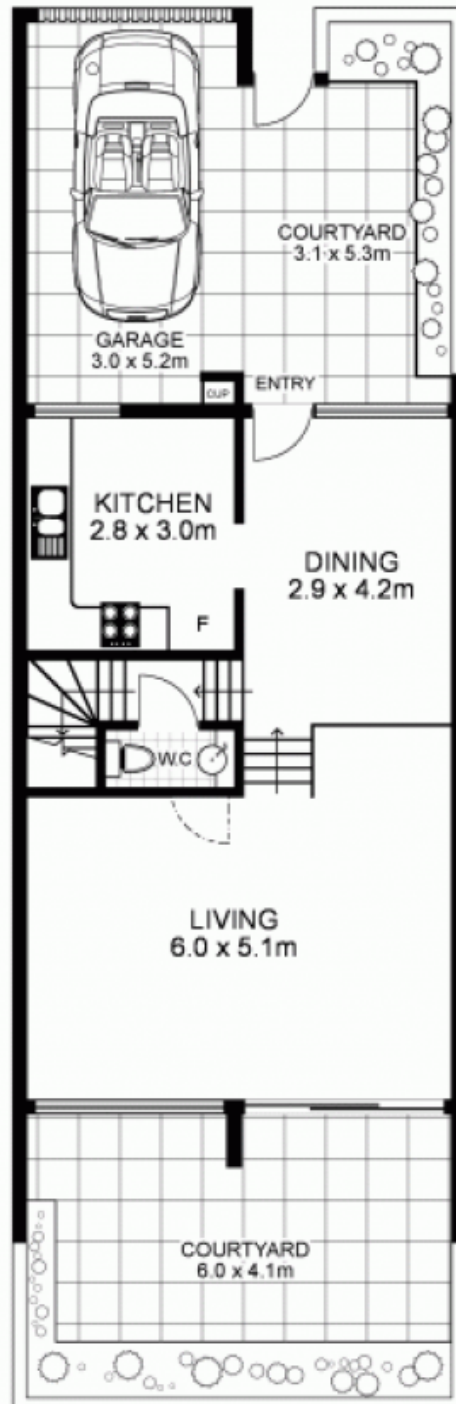
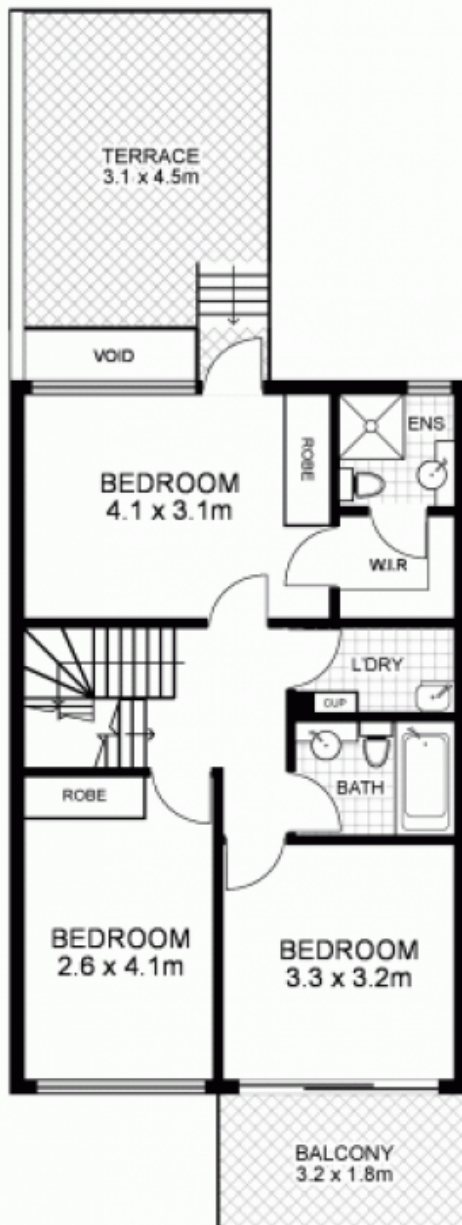
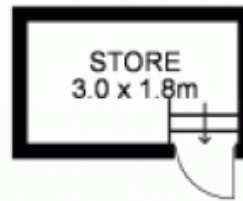
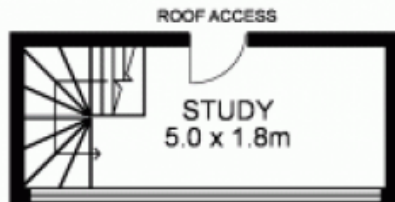
1

Position, Peace, & Privacy

Tucked away in a quiet tree lined cul-de-sac street, this perfectly positioned townhouse offers level walking to Neutral bay & Cremorne junctions. Beautifully presented and arranged over 3 spacious levels with a versatile floorplan, with courtyards and balconies off most living areas.

Stone Real Estate -

Head Office



3/42 Waters Road, CREMORNE

Disclaimer: This floor plan is intended as a guide only. Layout dimensions are approximate only. No representations or warranties of any nature whatsoever are given or intended. Any individuals using this information should always rely on their own enquiries.

www.alchemyimaging.com.au