



Typical lounge apts 2, 4, 6



Typical kitchen apts 2, 4, 6



Typical main bedroom apts 2, 4, 6

2/23 Bapaume Road MOSMAN, NSW

2

1

4 SOLD - ONLY 2 REMAINING FROM \$620,000

Price:

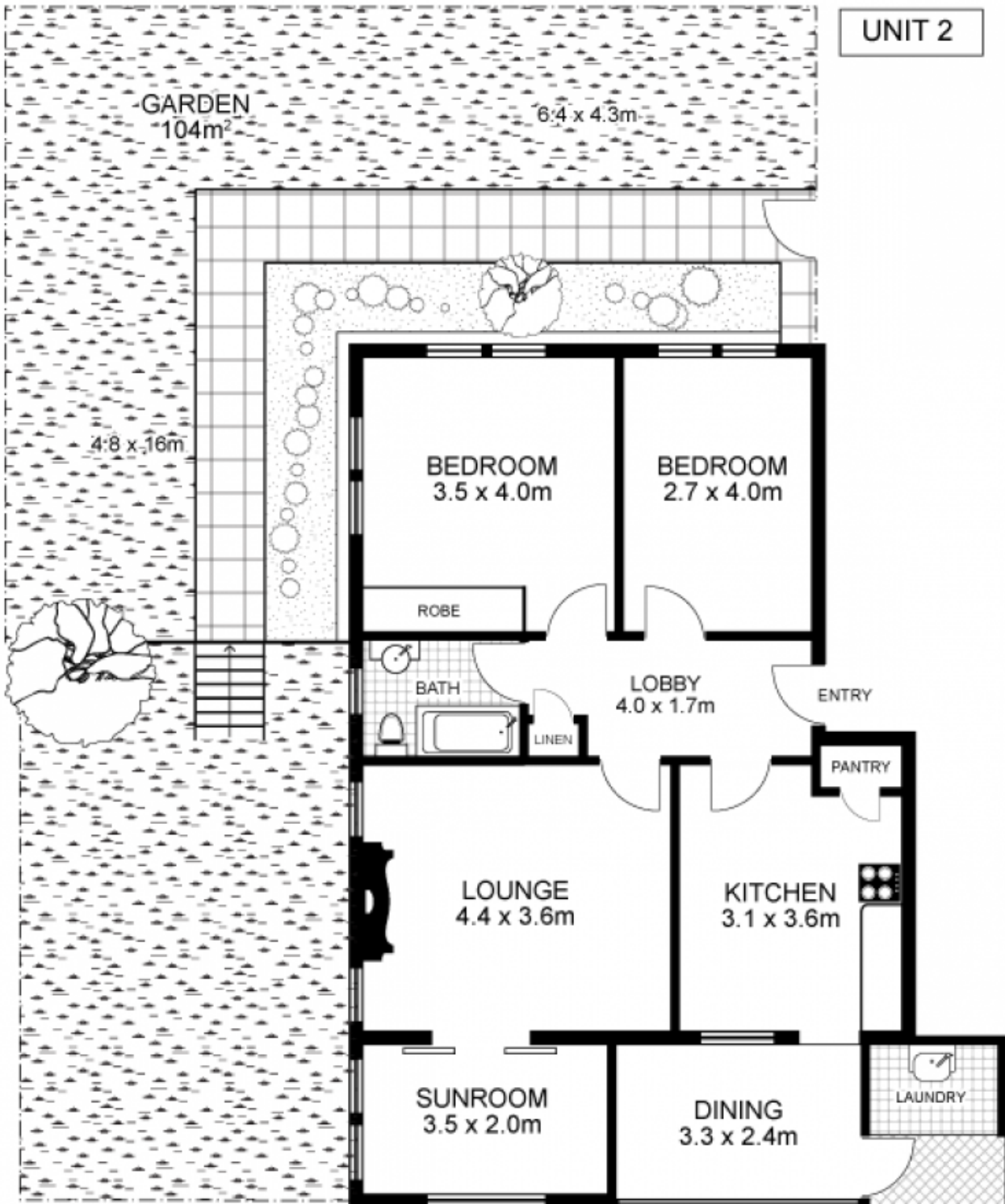
Priced from \$620,000

- This truly is an opportunity of a life time!
- Light & bright character apartments
- All 2 double bedroom, one bathroom, separate dining + sunroom
- Water views from every apartment
- Beautiful strata titled art deco building, with low outgoings
- Only one common wall
- Ornate ceilings, open fireplaces and separate lock up storage
- Rare opportunity to further capitalise, enormous potential and appeal

Stone Real Estate -

Head Office

UNIT 2



23 Bapaume Street, MOSMAN

Disclaimer: This floor plan is intended as a guide only. Layout dimensions are approximate only. No representations or warranties of any nature whatsoever are given or intended. Any individuals using this information should always rely on their own enquiries.
www.alchemyimaging.com.au