



22/58 Kurraba Road NEUTRAL BAY, NSW

2 

1 

1 

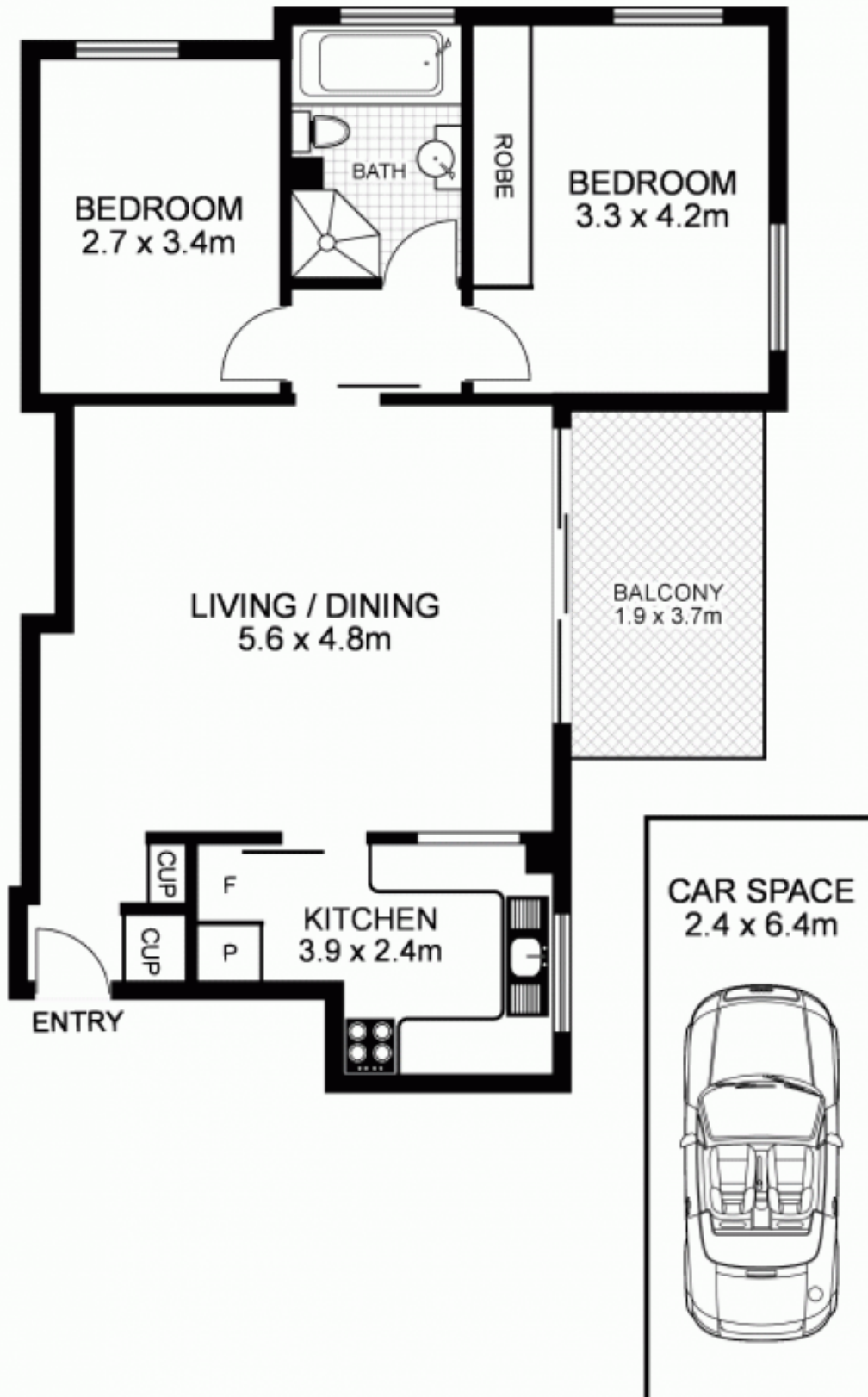
### Harbour Panorama

Mesmerising & captivating Harbour, city & Bridge vistas are enjoyed from this elevated 6th floor apartment. Views are experienced from most living areas especially the balcony. The property benefits from spacious and generous living areas over 80sqm.

Price:

Auction guide \$750,000 plus

Stone Real Estate -  
Head Office



**22/58 Kurraba Road, NEUTRAL BAY**

Disclaimer: This floor plan is intended as a guide only. Layout dimensions are approximate only. No representations or warranties of any nature whatsoever are given or intended. Any individuals using this information should always rely on their own enquiries.

[www.alchemyimaging.com.au](http://www.alchemyimaging.com.au)