



25/15-17 Corona Avenue ROSEVILLE, NSW



Urban Lifestyle with Space to Boast

A wrap-around entertainers courtyard and vaulted ceilings - this huge 176sqm apartment with no common walls is a must to see!

Level access and open plan living make this quiet apartment perfect for all ages to settle in to the North Shore lifestyle. Comprising of 3 good size bedrooms all with built-in wardrobes and the Master, it's own ensuite, all your storage and comfort needs are taken care of. The contemporary Caesarstone and stainless steel SMEG kitchen provides the perfect family hub and gourmet entertaining to the large living/dining area which spills seamlessly out to the private courtyard.

A prime location with proximity to sensational local schools, public transport and the desirable lifestyle of shops, restaurants and cafes of the surrounding area and the Chatswood precinct.

Approximate quarterly outgoings:

Levies: \$909

Water rates: \$171

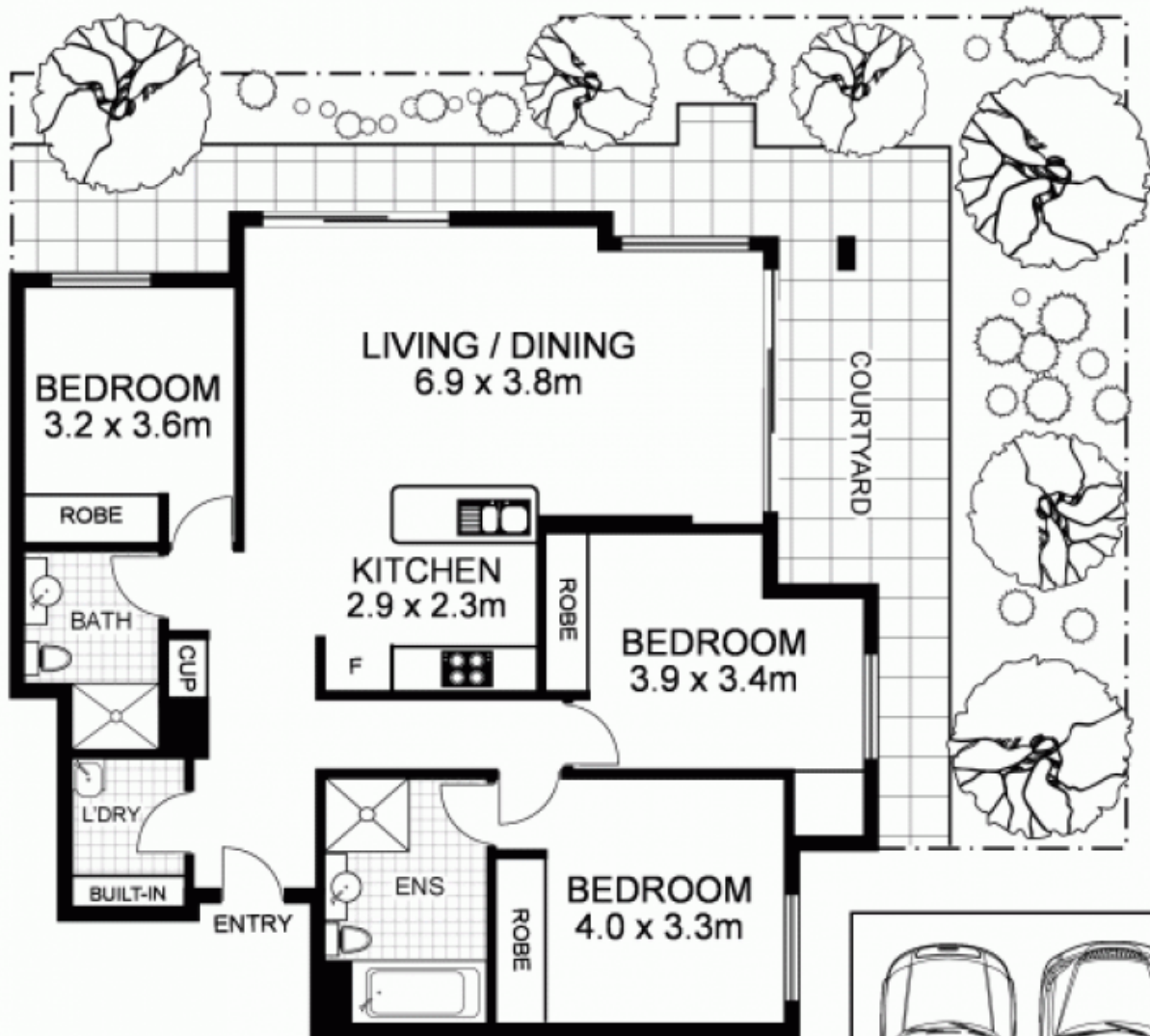
TOTAL: \$1,080 per quarter

Price:

Auction

Stone Real Estate -

Head Office



25/15 Corona Avenue, ROSEVILLE

Disclaimer: This floor plan is intended as a guide only. Layout dimensions are approximate only. No representations or warranties of any nature whatsoever are given or intended. Any individuals using this information should always rely on their own enquiries.



first national
REAL ESTATE | Cremorne

THINKING OF SELLING?

Why not call us for a free market appraisal of your property?

2a/283 Military Road
Cremorne

cremornefn.com.au

9904 1234