



6/37 The Boulevard CAMMERAY, NSW

2 

1 

North East Facing - 2 bedroom Apartment

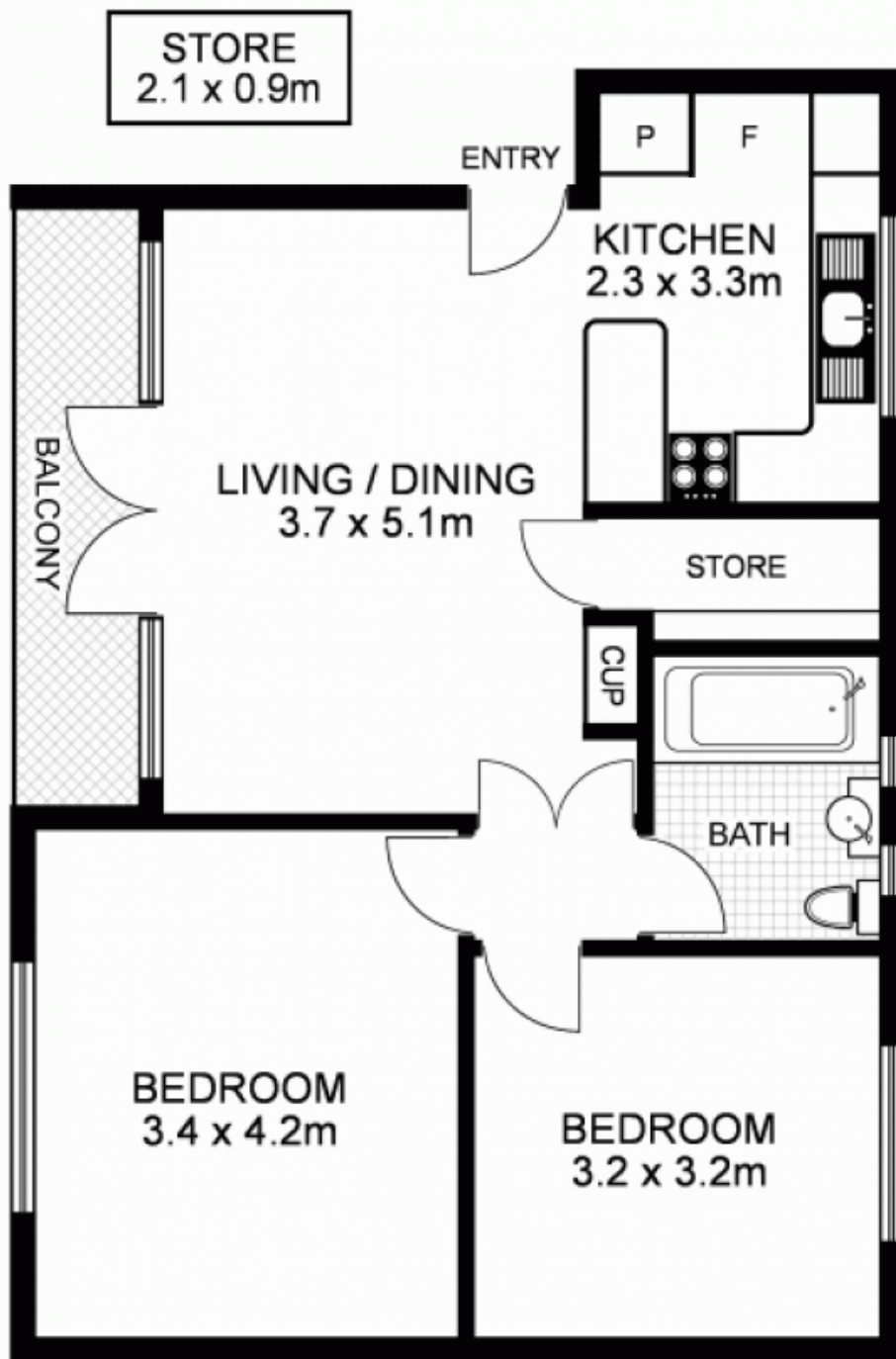
Located just perfectly, perched on the hill within this quiet cul de-sac and enjoying pleasant vistas and water views from the North/East. This first floor 2 double bedroom strata apartment benefits from an abundance of natural light and sunshine and a fabulous floorplan. Easy street parking is also available.

Price:

Offers over \$600,000

Stone Real Estate -

Head Office



6/37 The Boulevarde, CAMMERAY

Disclaimer: This floor plan is intended as a guide only. Layout dimensions are approximate only. No representations or warranties of any nature whatsoever are given or intended. Any individuals using this information should always rely on their own enquiries.



first national
REAL ESTATE | Cremorne

THINKING OF SELLING?

Why not call us for a free market appraisal of your property?

2a/283 Military Road
Cremorne

cremornefn.com.au

9904 1234