



134 Holt Avenue CREMORNE, NSW



Federation Charm & Development Potential

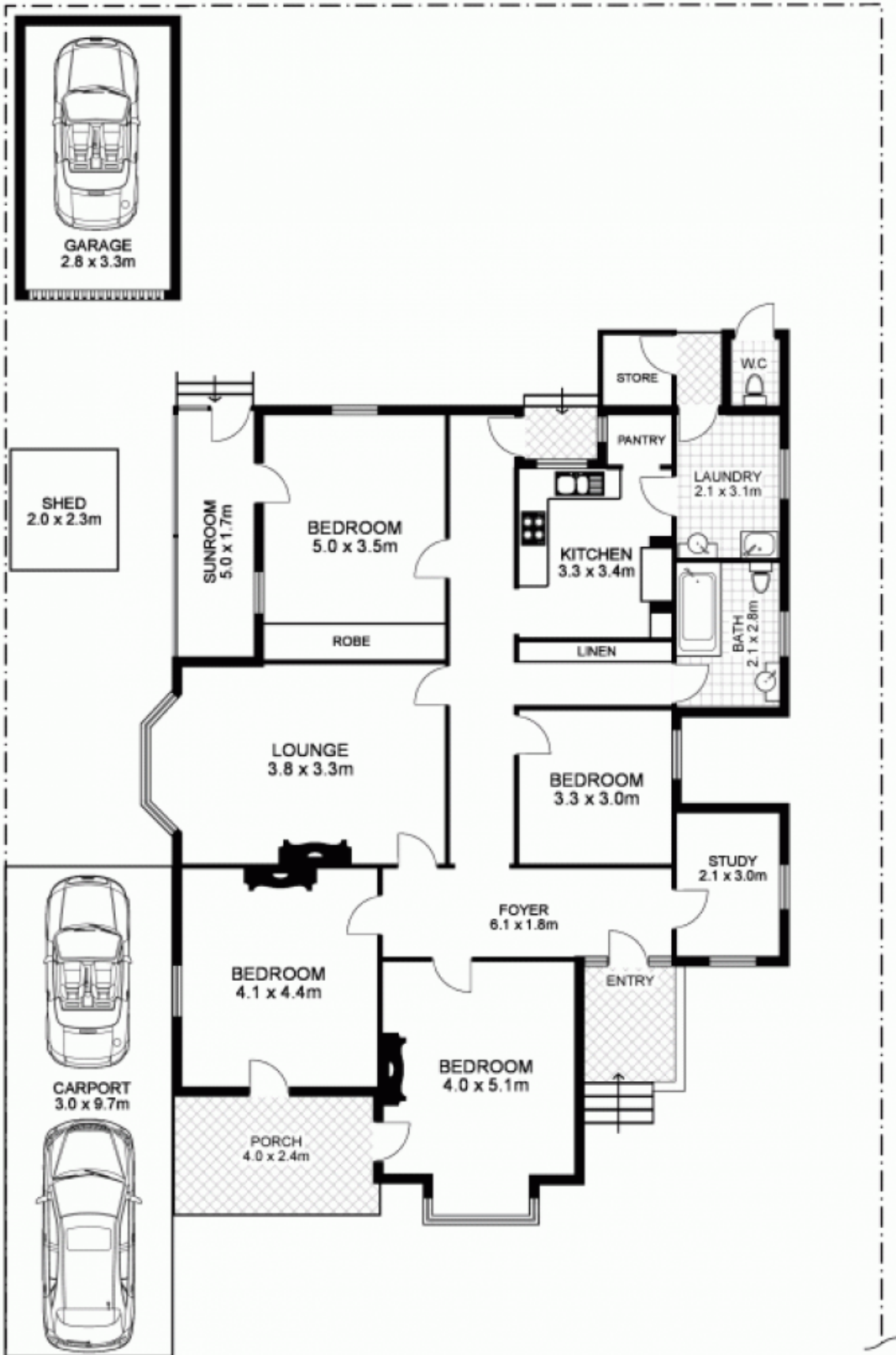
This charming, character filled Federation home offers literally endless opportunities, both with the existing residence and development potential. The land is zoned residential R3 and benefits from 2 separate titles, allowing for development (STCA) the generous land area is approx 669sqm.

Price:

Auction price guide on request

Stone Real Estate -

Head Office



134 Holt Avenue, CREMORNE

Disclaimer: This floor plan is intended as a guide only. Layout dimensions are approximate only. No representations or warranties of any nature whatsoever are given or intended. Any individuals using this information should always rely on their own enquiries.

www.alchemyimaging.com.au