

10 Ellalong Road CREMORNE, NSW

4

2

Endless Opportunities...

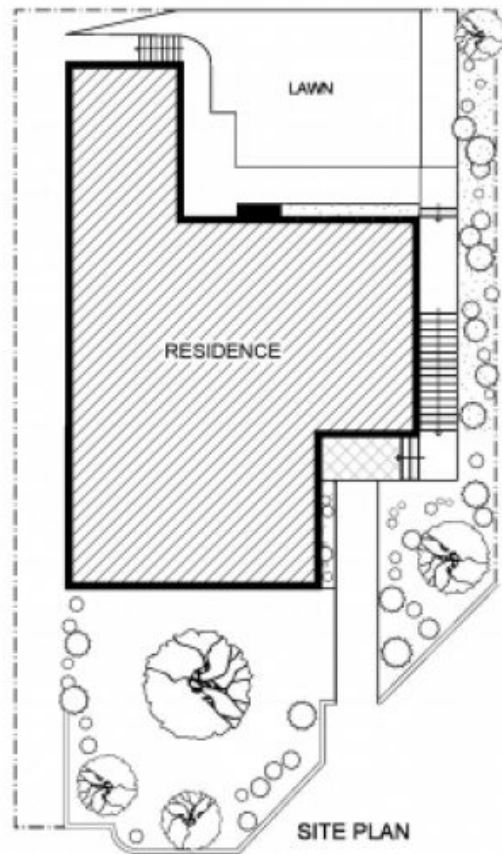
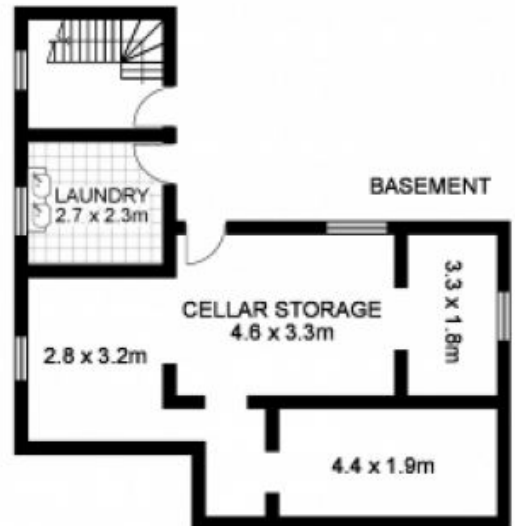
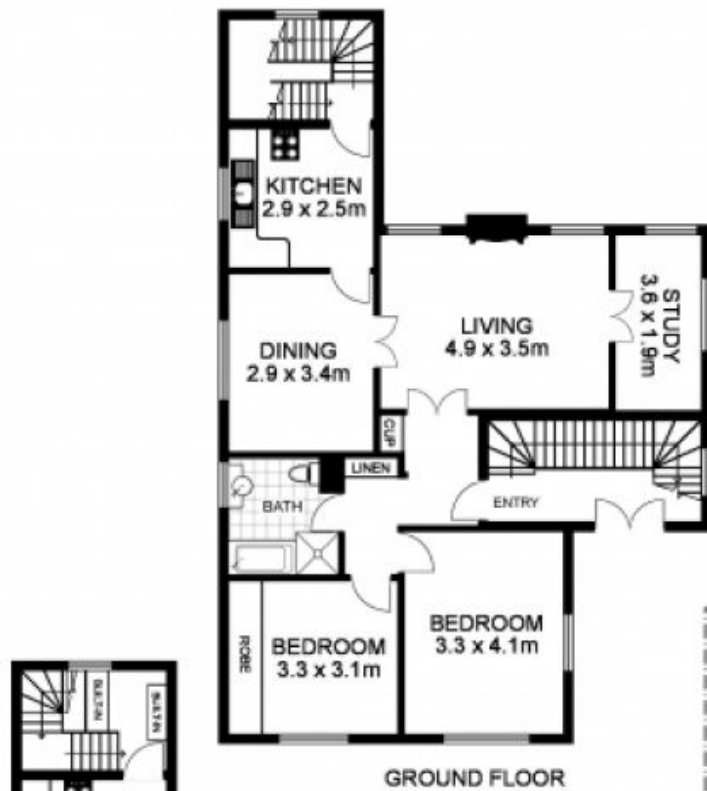
Boasting a prominent corner position in a highly popular & sought after location of North Cremorne, this exceptional opportunity presents itself to the market. A superb Torrens title full duplex, currently two separate self-contained, 2 bedroom + sunroom, separate lounge and dining, 1 bathroom apartments. Enjoy an abundance of natural light and an outlook towards Primrose Park & Brightmore Reserve, this is a wonderful chance to capitalise on a property that is being offered for the first time in nearly 40 years.

Price:

Auction

Stone Real Estate -

Head Office



10 Ellalong Road, CREMORNE

Disclaimer: This floor plan is intended as a guide only. Layout dimensions are approximate only. No representations or warranties of any nature whatsoever are given or intended. Any individuals using this information should always rely on their own enquiries.



THINKING OF SELLING?
 Why not call us for a free market appraisal of your property?

2a/283 Military Road
 Cremorne

cremornefn.com.au

9904 1234