

# Actual View



10/21 Rangers Road CREMORNE, NSW

2

2

1

## Position, Potential and Panoramic Views

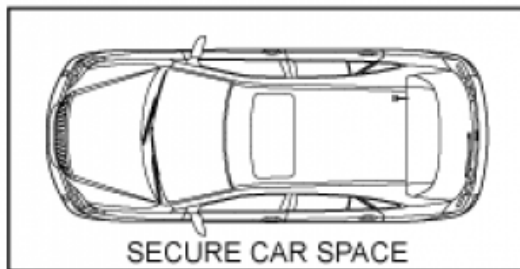
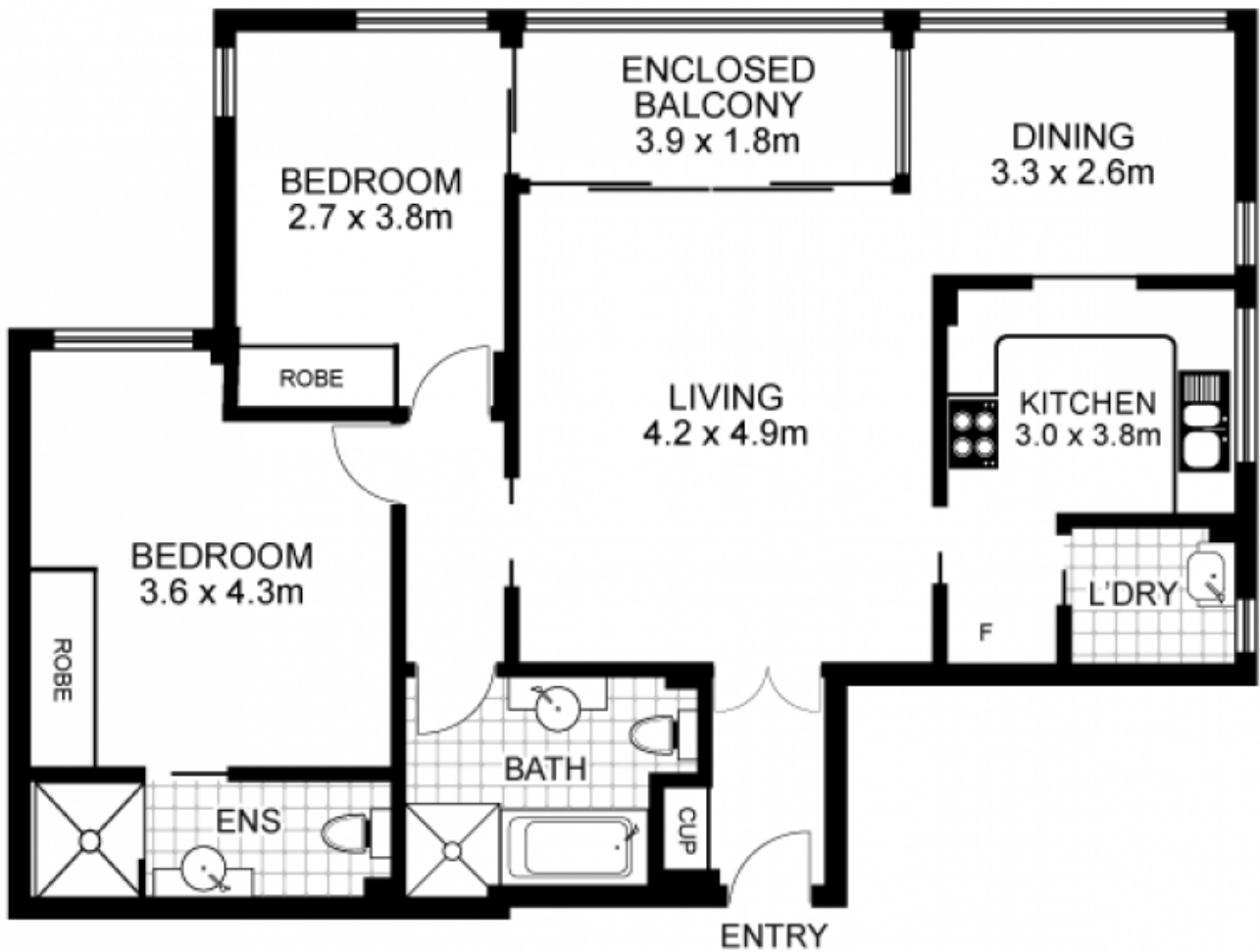
Presented in original but immaculate condition, offering endless opportunities to capitalise and improve, this 4th floor, 2 bedroom 2 bathroom security strata apartment represents an unrivalled lifestyle opportunity and is perfectly located just around the corner from Neutral Bay junction with popular restaurants, cafe's and easy transport to Sydney CBD. Woolworths supermarket just a stroll away.

Price:

Price guide on request

Stone Real Estate -

Head Office



STORAGE  
1.2m<sup>2</sup>



## 10/21 Rangers Road, CREMORNE

Disclaimer: This floor plan is intended as a guide only. Layout dimensions are approximate only. No representations or warranties of any nature whatsoever are given or intended. Any individuals using this information should always rely on their own enquiries.



**first national**  
REAL ESTATE | Cremorne

### THINKING OF SELLING?

Why not call us for a free market appraisal of your property?

2a/283 Military Road  
Cremorne

<http://lowernorthshore.property>

9904 1234