



6/17 Langley Avenue CREMORNE, NSW

4

2

2

Fabulous Townhouse in a Perfect Location

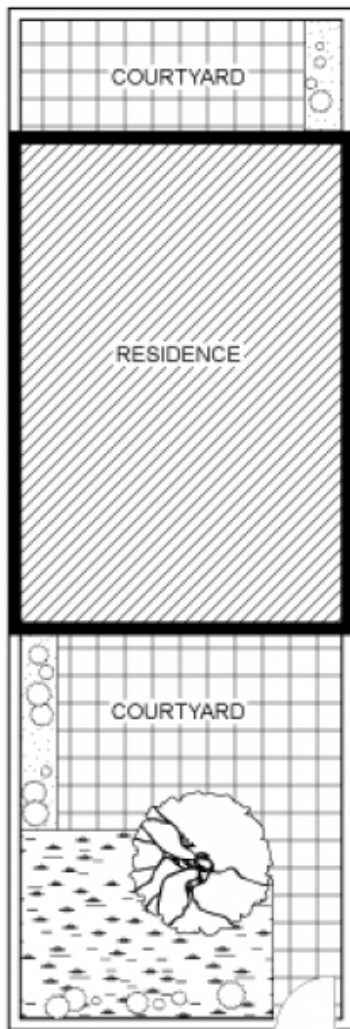
Situated in what can only be described as an enviable location, a superb townhouse within easy walking distance of Cremorne junction offering a lifestyle of absolute convenience. With multiple choices of restaurants, popular cafe's the Orpheum cinema and the express bus to Sydney CBD all just moments away. This 3 level completely renovated modern residence occupies a vast "on title" area of 221sqm. Benefitting from 4 double bedrooms or optional 3 bedrooms with additional living area, double lock up garage with internal access, a very sunny and private courtyard and security, viewing this property will not disappoint.

Price:

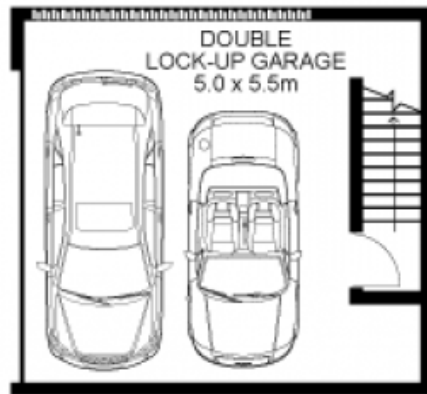
Auction

Stone Real Estate -

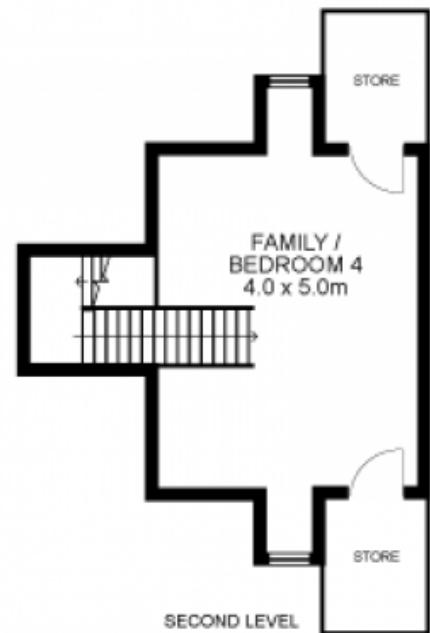
Head Office



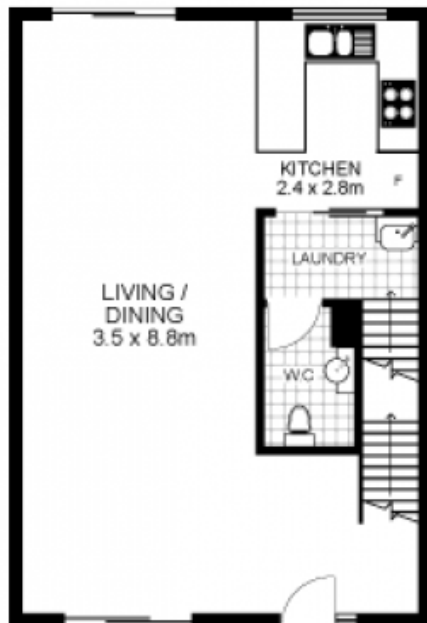
SITE PLAN



BASEMENT LEVEL

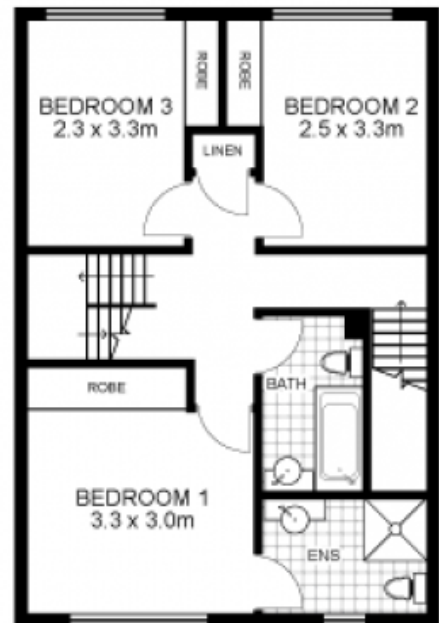


SECOND LEVEL



GROUND LEVEL

ENTRY



FIRST LEVEL



NORTH

6/17 Langley Avenue, CREMORNE

Disclaimer: This floor plan is intended as a guide only. Layout dimensions are approximate only. No representations or warranties of any nature whatsoever are given or intended. Any individuals using this information should always rely on their own enquiries.



first national
REAL ESTATE | Cremorne

THINKING OF SELLING?

Why not call us for a free market appraisal of your property?

2a/283 Military Road
Cremorne

<http://lowernorthshore.property>

9904 1234