



21/139 Middle Head Road MOSMAN, NSW



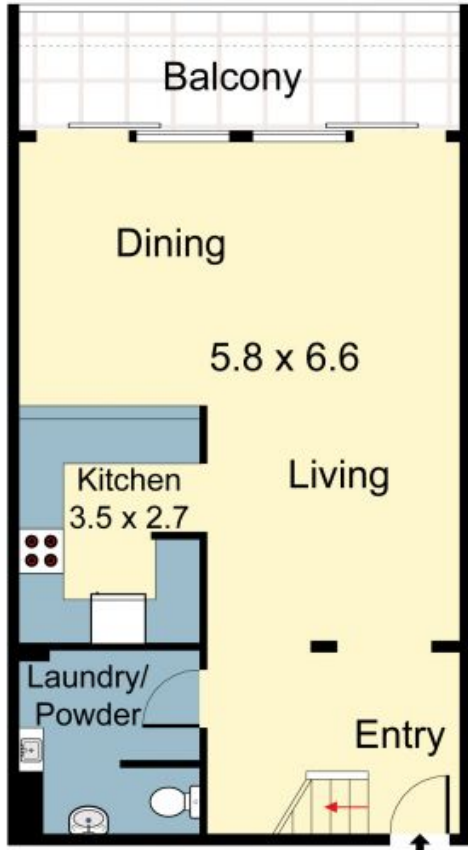
### Fabulous 2 Storey Apartment in Mosman!

This luxurious NNE facing apartment is comfortably arranged over 2 levels, positioned in what can only be described as an envied location, just steps away from the heart of Mosman Village and easy walk to Balmoral beach. Water views are enjoyed from virtually every living area and the sunny balcony. 2 good size double bedrooms both with built-ins, master with en-suite, lift access from secure double car space to your door.

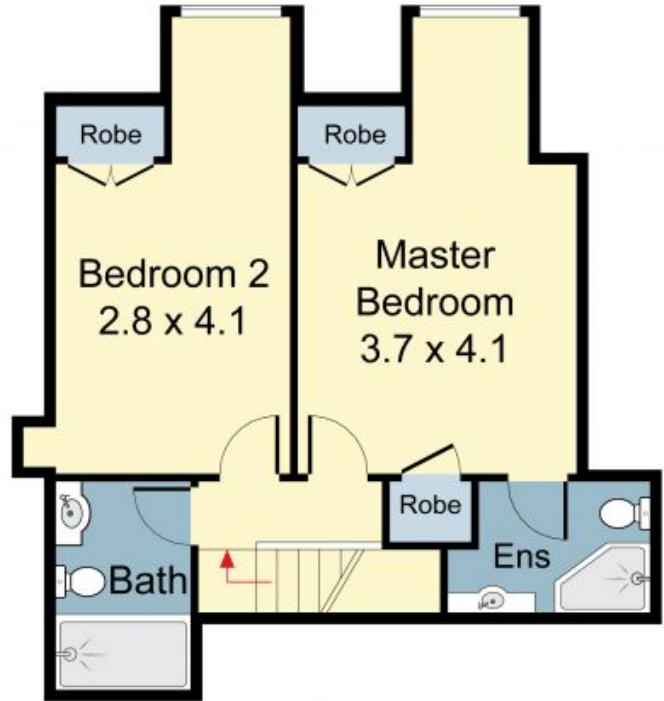
Price:

Auction guide on request

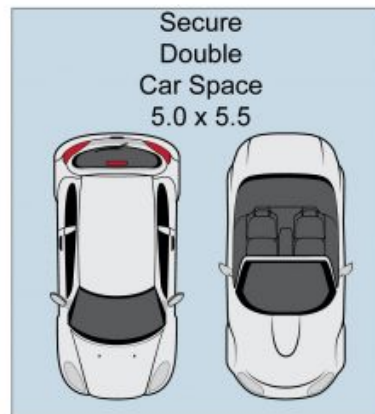
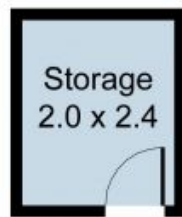
Stone Real Estate -  
Head Office



Entry Level



First Floor



**first  
national**  
REAL ESTATE

21/139 Middle Head Road, Mosman



DISCLAIMER: PLANS SHOWN ARE FOR PRESENTATION PURPOSES AND ARE NOT PART OF ANY LEGAL DOCUMENT. ALL MEASUREMENTS AND FIGURES ARE APPROXIMATE.