



1.504/18 Hannah Street Beecroft, NSW



Luxury Apartment in ultra convenient location

This modern and spacious apartment in the 'Beecroft Place' residence is located in the heart of Beecroft, where its sought-after position is literally moments from schools, shops, cafes, restaurants, city buses and Beecroft Station.

Price: Contact Agent
Council Rates: \$340.70 p/q
Water Rates: \$179.06 p/q
Strata Rates: \$951.65 p/q



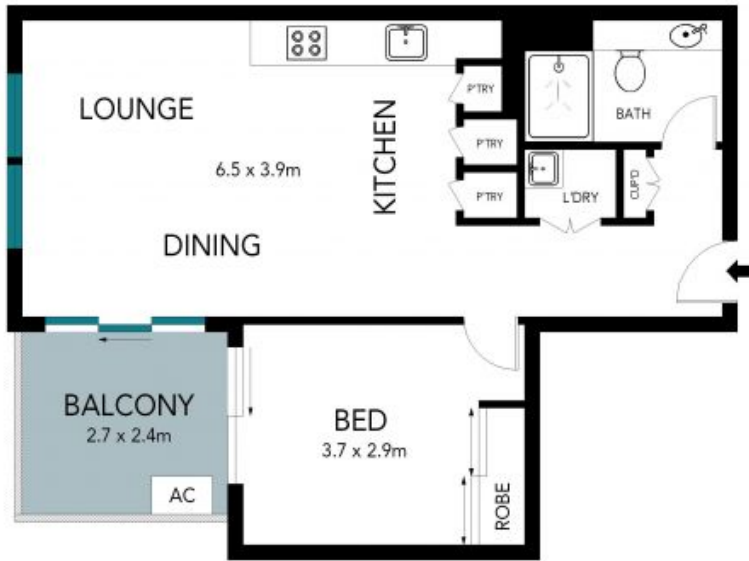
Jeff Jianfu Luo

0425 286 668

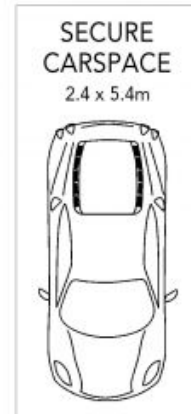


Wenjie Luo

0433 971 007



LEVEL FIVE



BASEMENT



The floor plan is not to scale; measurements are indicative and in metres. Exterior elements are not in position. Plans should not be relied on. Interested parties should make and rely on their own enquiries.

1.504/18 Hannah Street, Bercroft

