



11/157 Hampden Road Wareemba, NSW



## Modern & Spacious Split Level Townhouse

Forming part of a boutique collection of townhouses, this property boasts a private entry featuring an expansive north facing, sunny courtyard. In addition there is a separate rear courtyard providing plenty of room for private outside entertaining and relaxation. The generous open plan living area runs between the two courtyards providing a light and bright ambiance with leafy and private outdoor areas at each end. Upstairs you will find a modern fully renovated bathroom, spacious bedroom with double built ins and a separate laundry.

**Price:** Deposit Taken

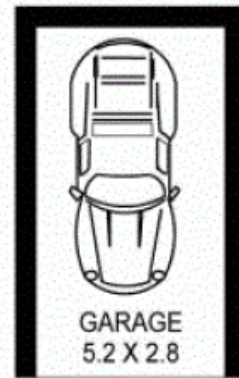
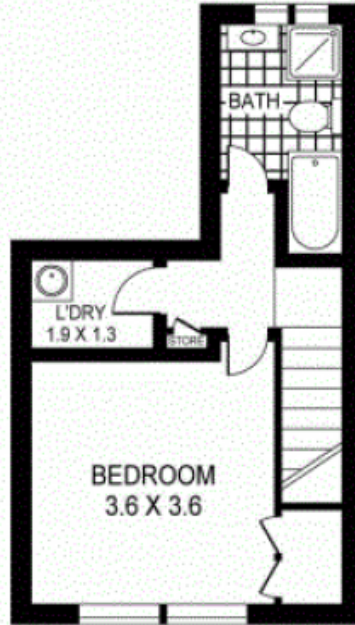
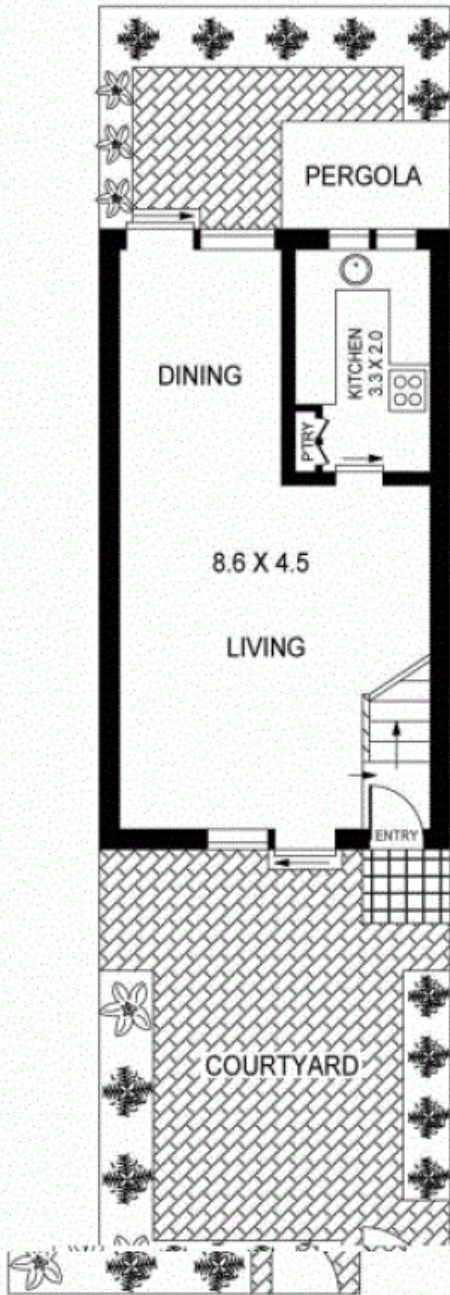
**Bond:** \$2,880

**Available Date:** 22/09/2023



**Enrico Catania**

0450 072 832



FIRST FLOOR

GROUND FLOOR

NOTE :- SINGLE LOCK UP GARAGE

57-159 HAMPDEN ROAD

WAREEMBA

INFORMATION CONTAINED HEREIN IS GATHERED FROM SOURCES WE BELIEVE TO BE RELIABLE. WE CANNOT GUARANTEE ITS ACCURACY. INTERESTED PERSONS SHOULD RELY ON THEIR OWN ENQUIRIES. DIMENSIONS ARE APPROXIMATE.

0 1 5

SCALE BAR in metres

11/1

ALL INFO FROM S HOWEY AND INT OWN EP DIMENS