



18 Robertson Street Greenwich, NSW



Waterfront Sanctuary with Breathtaking Views

Nestled in an intimate cul-de-sac, this amazing home spans to the water's edge incorporating terraced gardens and private access to a beach

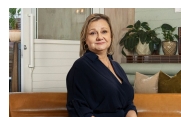
Price: \$2,400 per week

Available Date: 30/10/2023



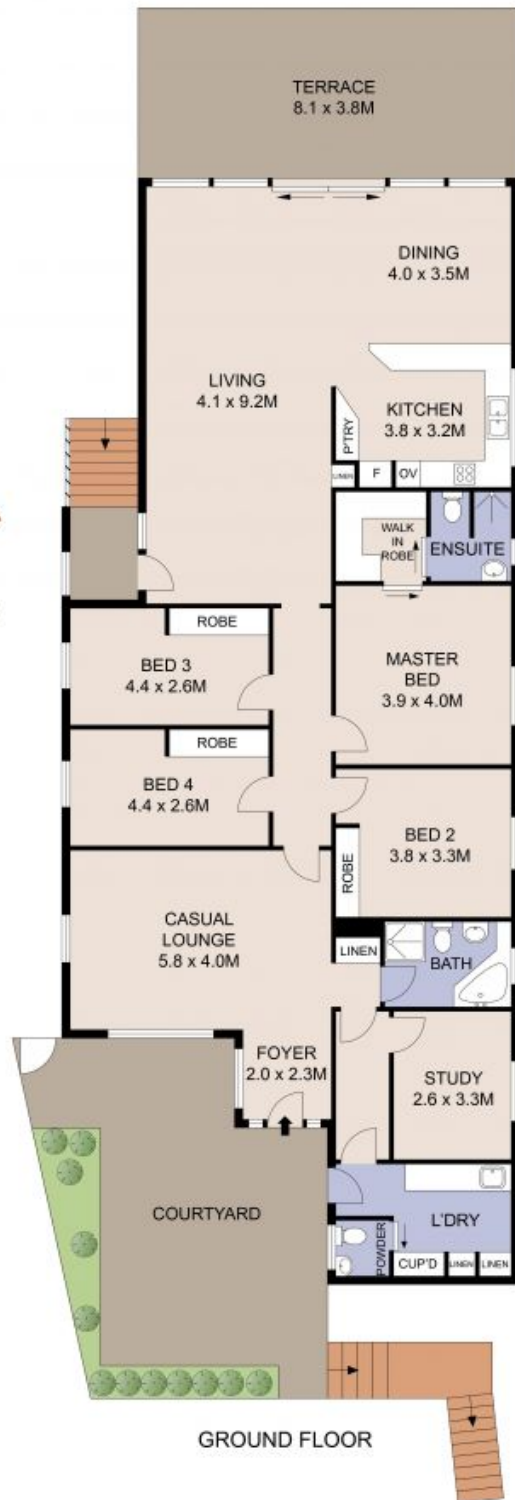
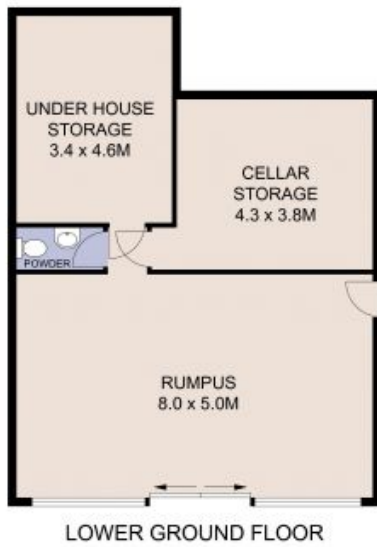
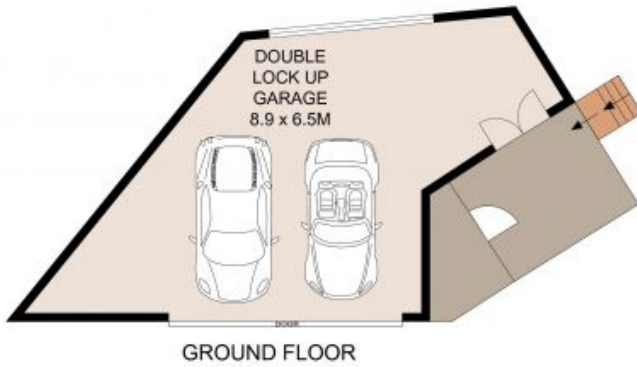
Georgina Williams

0434 808 839



Diane Shipley

0413 137 874

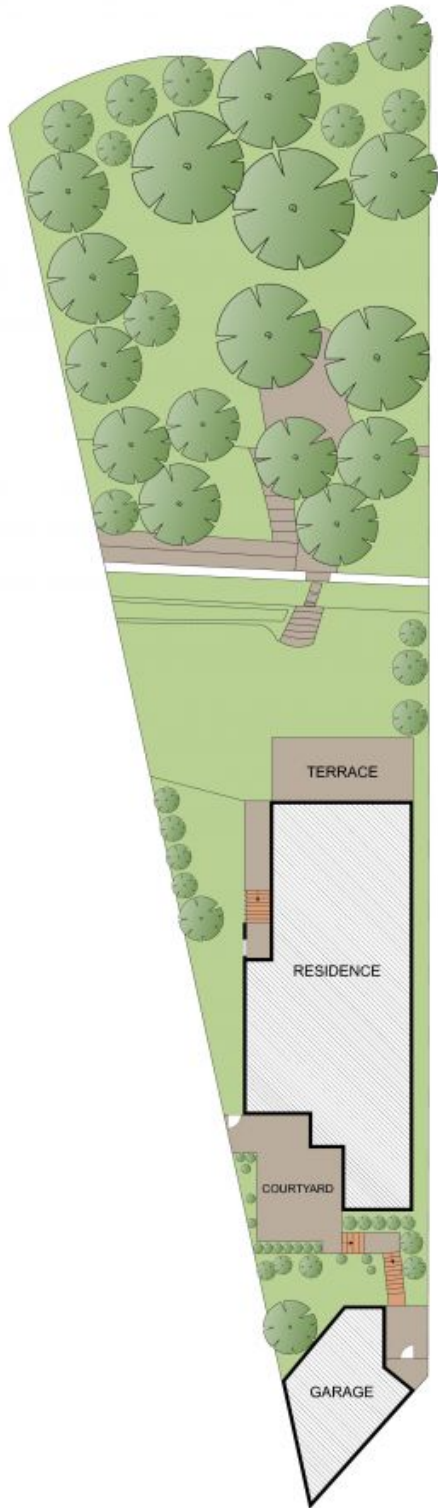


Plans shown are for presentation purposes only and are not part of any legal document or title. They are subject to errors, omissions, inaccuracies and should not be used as a sole and accurate reference. Interested parties should make their own inquiries using independent sources.

18 ROBERTSON STREET

GREENWICH





SITE PLAN
(NOT TO SCALE)



Plans shown are for presentation purposes only and are not part of any legal document or title. They are subject to errors, omissions, inaccuracies and should not be used as a sole and accurate reference. Interested parties should make their own inquiries using independent sources.

18 ROBERTSON STREET

GREENWICH