



206/1214-1220 Gold Coast Highway Palm Beach, QLD



Stunning 1 bedroom Coastal Apartment in the heart of Palm Beach

Our stunning 1 bedroom coastal apartments range in size, aspect and location and would be perfect for owner occupation or as in investment. The apartments are beautifully appointed with high-end finishes, Miele appliances, some come with studies and all come with one car space.

Eva Tenth Avenue provides a beautiful and lush amenity area on the ground floor which includes:

- Pool
- Communal lounge area
- Gym
- Yoga lawn
- BBQ area
- All surrounded by lush sub-tropical landscaping
- Palm Beach Village ? 250m

Price: \$740,000



Brendan Andrews

0417 788 882



Brendan Andrews

0417 788 882

TENTH AVENUE
MY IDEA OF PARADISE

EVA

PALM BEACH
GOLD COAST



FLOORPLAN

Type C

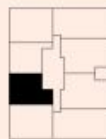


DETAILS

	Bedrooms	1
	Bathrooms	1
	Car space	1

AREA

Enclosed	67m ²
Balcony	8m ²
Total	75m²



DISCLAIMER

These drawings are conceptual design drawings only. The information contained herewith is subject to design development and further input from independent planning, structural, services and other technical consultants. Copyright in this drawing is the property of BDA Architecture and may not be retained, copied in whole or in part or used other than for the specific uses, licence and site for which it has been prepared and issued.