



232 Princes Highway Arncliffe, NSW



### SOLD | SAM ABBAS

Just over 5km down the road from King Street Newtown, and footsteps from trains, shops and dining, this updated semi offers incredible value in a booming locale.

Within its solid, double-brick embrace, the abode is impressively spacious, with three bedrooms, plus a sunroom, offering a perfect home office.

Fresh white walls, floating floorboards and downlights complement the contemporary kitchen and bathroom, while separate adjoining lounge and dining rooms provide ample living space.

Entertain in the secluded courtyard and make use of the off-street parking space while accessing all amenities on-foot. Inspect to discover one of Sydney's most exciting up-and-coming locations within 10km of the CBD.

- Three bedrooms with built-ins, plus sunroom or study

Price:

SOLD | \$1,190,000



Sam Abbas

0406 750 075



Tanios Azzi

0412 772 369



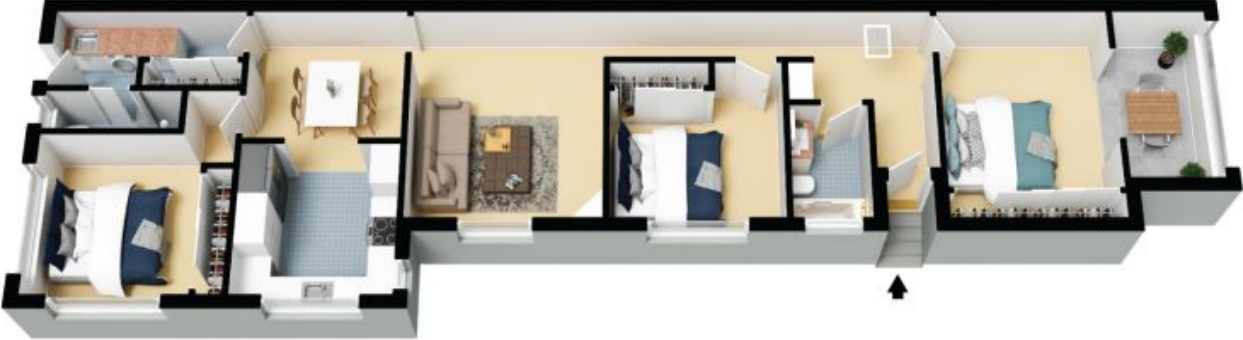


Site Plan



The site plan and floor plan are not to scale; measurements are indicative and in metres. Bushes and trees are placed for illustration purposes. Plans should not be relied on. Interested parties should make and rely on their own enquiries. All other information provided has been collected from reliable sources but cannot be guaranteed for accuracy.

232 Princes Highway  
Arncliffe



The floor plan is not to scale; measurements are indicative and in metres. All features included in this 3D plan are for inspiration purposes only. This is not an exact replica of the property or the position of exterior elements. Plans should not be relied on. Interested parties should make and rely on their own enquiries.