

6/33 Milray Avenue Wollstonecraft, NSW 2 1 2

Large, modern two bedroom Apartment.

This two bedroom apartment situated on the top floor boasting a north facing aspect is generous in space. Positioned in a small security block with only 8 units in the complex.

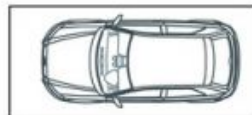
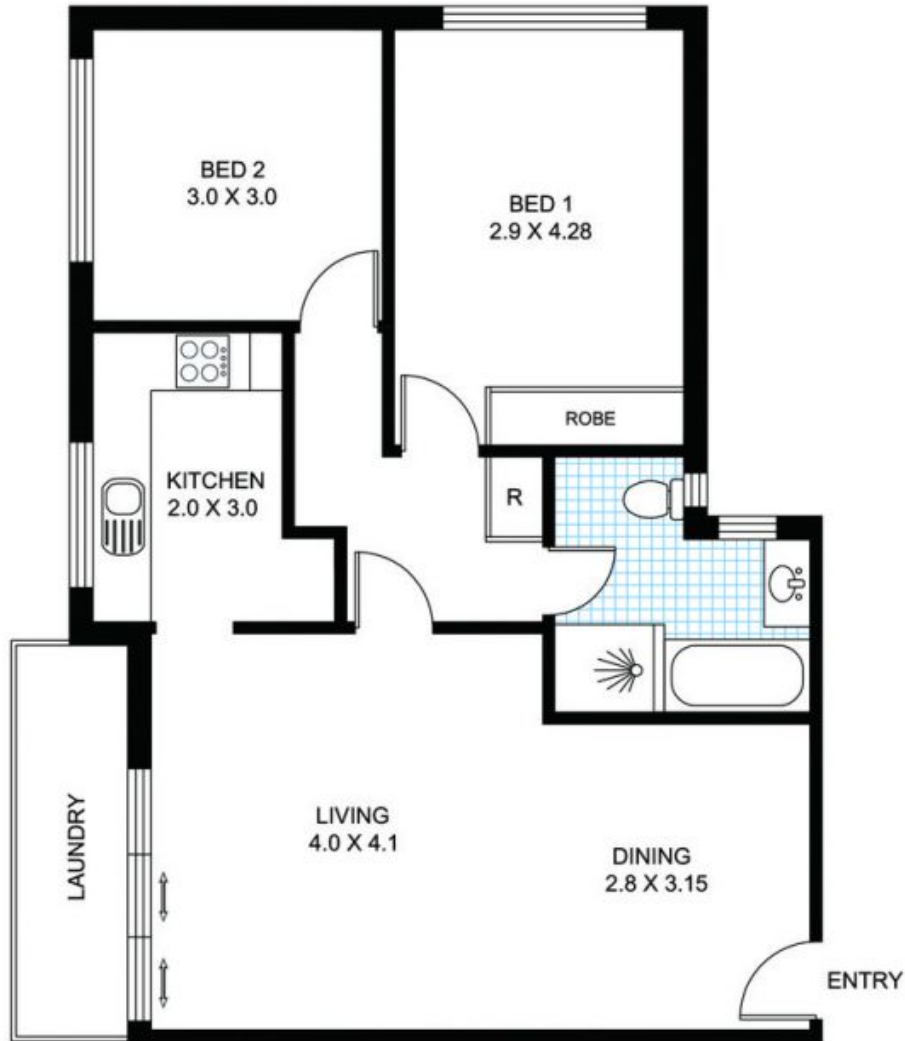
Price: \$650 per week

Bond: \$2,600

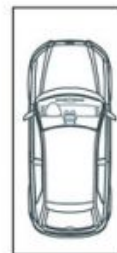
Available Date: 12/10/2023



Harry Schmidt



CAR SPACE



CAR SPACE

6 / 33 Milray Avenue, Wollstonecraft

Disclaimer: Floor plan shown is for presentation purposes and is not part of any legal document or title. All measurements and figures are approximate. Interested parties should make their own enquiries.