



3/18-20 Helen Street Westmead, NSW

2 1 1

Westmead Hospital Precinct Location

Sharing only one common wall, this spacious two bedroom apartment enjoys a northerly aspect and generously proportioned interiors. Situated within the Westmead Hospital Precinct, it's located within walking distance to medical amenities, parks, cycling track, dining & commercial facilities, Parramatta Park, and moments to Parramatta Aquatic Centre, Parramatta Westfield and upcoming light rail. You will enjoy this apartment's central and convenient location.

Price: \$510,000



Simar Gill

0410 312 242



Chris Kyreos

0432 354 445

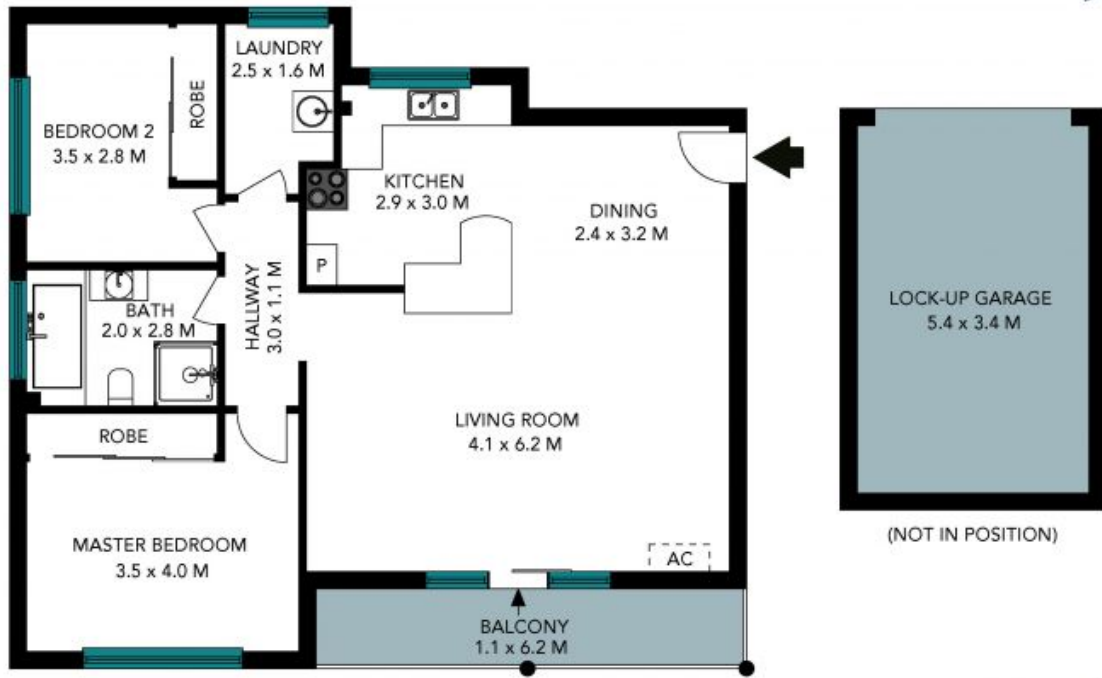
3/18-20 Helen Street
Westmead



The floor plan is not to scale; measurements are indicative and in metres. All features included in this 3D plan are for inspiration purposes only. This is not an exact replica of the property or the position of exterior elements. Plans should not be relied on. Interested parties should make and rely on their own enquiries.

3/18-20 Helen Street
Westmead

STONE



The floor plan is not to scale, measurements are indicative and in metres. Exterior elements are not in position. Plans should not be relied on, interested parties should make and rely on their own enquiries. All other information provided has been collected from reliable sources but cannot be guaranteed for accuracy.