



STONE



STONE



STONE

2/20 Rees Street Mays Hill, NSW



Entertainer's Paradise

This sun-drenched two bedroom apartment is conveniently located on the ground floor of a boutique complex of only 13 apartments. Enjoying a northerly aspect, the spacious open plan living and dining room receives plenty of natural light, and offers a seamless indoor/outdoor experience as it flows out to the large, partially covered entertainer's courtyard.

Ideally located within close proximity to public transport, Westfield Parramatta, Westmead Hospital Precinct, popular schools and directly opposite Freame Park & sports field.

Price: \$580,000-\$630,000



Aaron Lih

0420 825 598



Nicola Reilly

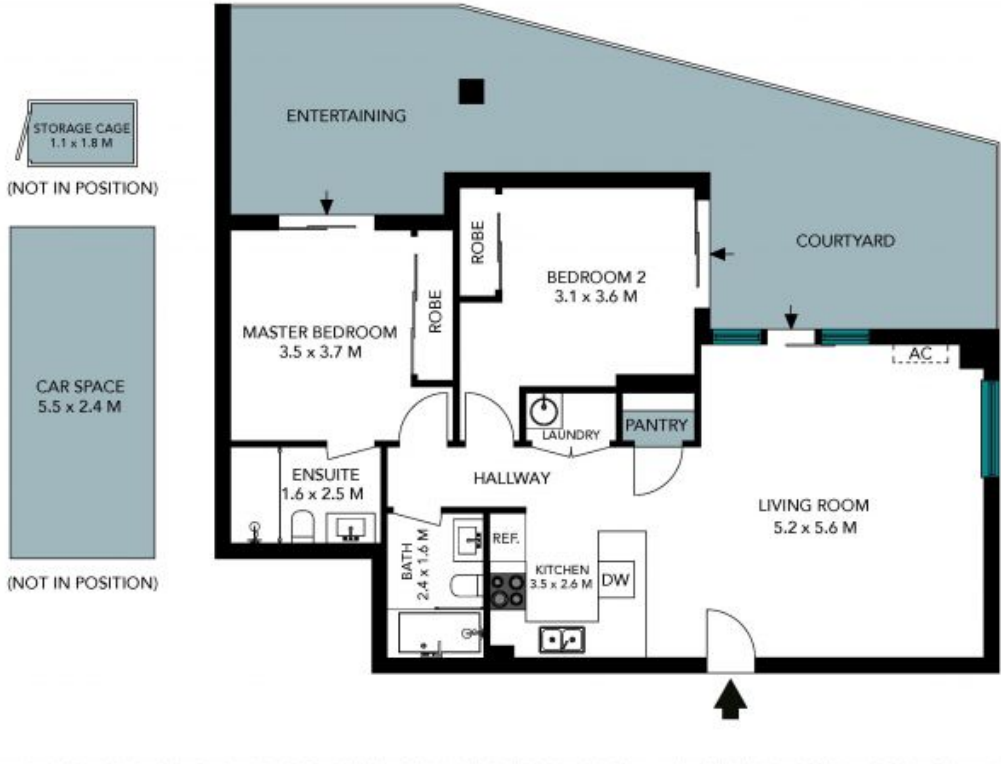
0405 203 525

2/20 Rees St
Mays Hill

STONE



The floor plan is not to scale; measurements are indicative and in metres. All features included in this 3D plan are for inspiration purposes only. This is not an exact replica of the property or the position of exterior elements. Plans should not be relied on. Interested parties should make and rely on their own enquiries.



The floor plan is not to scale, measurements are indicative and in metres. Exterior elements are not in position. Plans should not be relied on, interested parties should make and rely on their own enquiries. All other information provided has been collected from reliable sources but cannot be guaranteed for accuracy.