



546 - 548 Parramatta Road Petersham, NSW

### EXCEPTIONAL LEASING OPPORTUNITY WITH UNPARALLELED EXPOSURE

**\*\* Price Reduced \*\***

Stone Commercial are proud to Exclusively present 546- 548 Parramatta Road, Petersham. The property is positioned on the high point of Taverners Hill and offers a wide glass frontage with endless exposure.

The space is ready to be occupied attracting a variety of operators with a (B2 Local Centre Zoning) ideally suited for Centre-based child care facilities, Commercial premises, Community facilities, Educational establishments, Entertainment facilities, Medical centres & Recreation facilities offering a once in a life time opportunity to secure a prime piece Real Estate.

Features include:

- 265\* sqm of Net Lettable Area
- RLA + Onsite parking available
- Male & Female ameniti...

Council Rates: \$0.00

Water Rates: \$0.00

Strata Rates: \$0.00



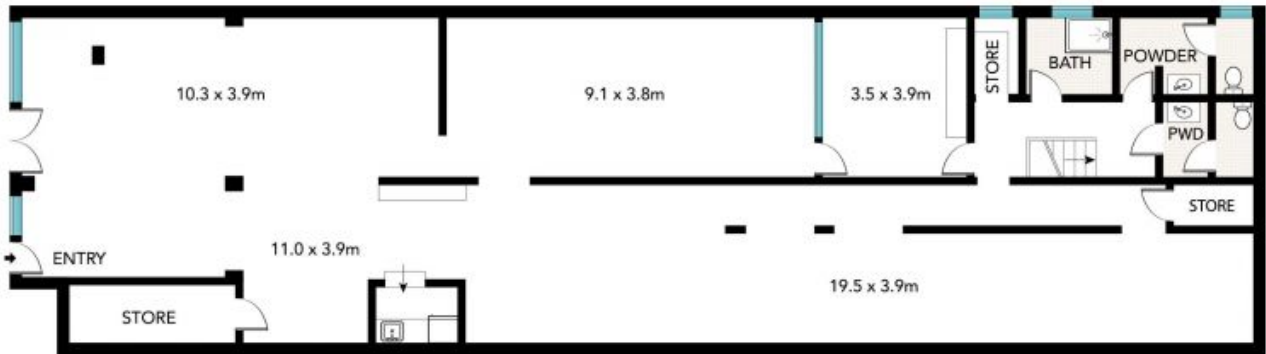
**Paul Di Mauro**

0431 099 976

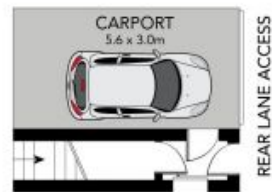


**Daniel Costa**

0411 376 625



CEILING HEIGHT: 2.5m - 3.5m



546/548 Parramatta Road, Petersham

INT: 250 m<sup>2</sup>  
PARKING: 17 m<sup>2</sup>



All information in this document has been gathered from various third party sources we believe to be reliable; however, we cannot guarantee its accuracy, and we accept no responsibility and disclaim all liability in respect to any errors, omissions, inaccuracies or misstatements in this document. Prospective purchasers are advised to carry out their own investigations and rely on their own enquiries.