



37 Rembrandt Drive Middle Cove, NSW

4

2

3

## Uninterrupted water views in exclusive enclave

Commanding uninterrupted water views over Fig Tree Cove and Sugarloaf Bay, this oversized solid brick home offers ample indoor and outdoor living with exciting potential to redecorate throughout. Elevated in position and set on a 770sqm parcel of land with wide frontage, this family residence is a perfect proposition for extended families and empty nesters seeking a unique opportunity within the waterfront locale of Middle Cove.

- Potential to further decorate and capitalise on the magnificent water views
- Flexible floorplan reveals choice of formal and casual living | dining areas
- Multiple living spaces includes media room, teenage retreat and home office
- Several entertaining areas, under cover terrace, swimming pool with spa and established landscaped gardens and surrounds
- Impeccable kitchen with solid Corian benches, showcasing stainless steel appliances and ample bench space and cabinetry
- Jetmaster fireplace in the formal living room

Price:

Contact Agent



**Marize Bellomo**

0414 972 203



**Marize Bellomo**

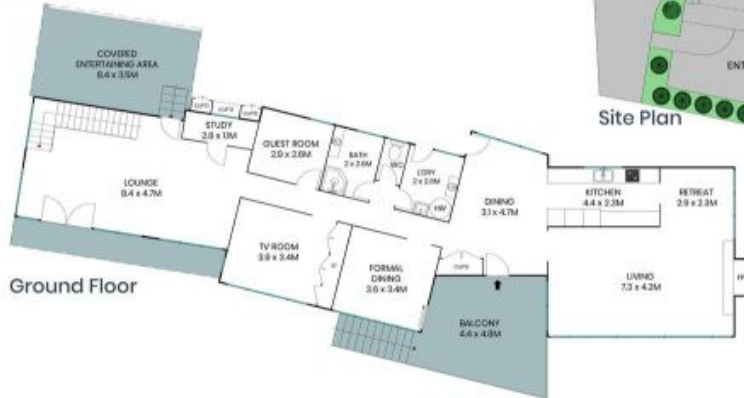
0414 972 203



37 Rembrandt Drive  
Middle Cove



First Floor



Ground Floor



Site Plan



The site plan and floor plan are not to scale; measurements are indicative and in metres. Bushes and trees are placed for illustration purposes. Plans should not be relied on. Interested parties should make and rely on their own enquiries. All other information provided has been collected from reliable sources but cannot be guaranteed for accuracy.

37 Rembrandt Drive  
Middle Cove



The floor plan is not to scale; measurements are indicative and in metres. All features included in this 3D plan are for inspiration purposes only. This is not an exact replica of the property or the position of exterior elements. Plans should not be relied on. Interested parties should make and rely on their own enquiries.