

302/11-15 Robilliard Street Mays Hill, NSW



### Elevated Position

Well-proportioned interiors give this light and bright apartment outstanding lifestyle appeal. The easy flow layout separates the three generous sized bedrooms from the home's open-plan living, dining, kitchen and outdoor entertaining areas. This boutique complex is positioned in a quiet street, yet only minutes to transport and shops and approximately 1.5km to the Parramatta CBD.

Price: \$700,000-\$750,000



**Aaron Lih**

0420 825 598

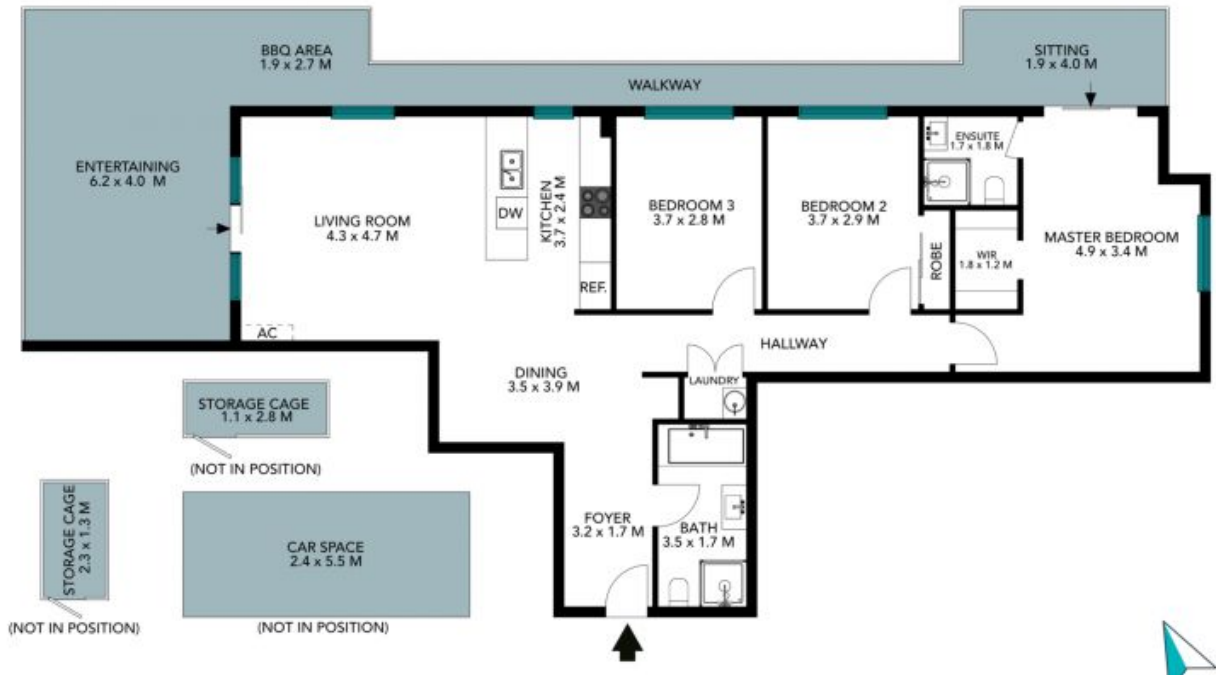


**Nicola Reilly**

0405 203 525

302/11-15 Robilliard St  
Mays Hill

STONE



The floor plan is not to scale, measurements are indicative and in metres. Exterior elements are not in position. Plans should not be relied on, interested parties should make and rely on their own enquiries. All other information provided has been collected from reliable sources but cannot be guaranteed for accuracy.

302/11-15 Robilliard St  
Mays Hill



The floor plan is not to scale; measurements are indicative and in metres. All features included in this 3D plan are for inspiration purposes only. This is not an exact replica of the property or the position of exterior elements. Plans should not be relied on. Interested parties should make and rely on their own enquiries.