

36 Strickland Avenue Lindfield, NSW

5 

4 

4 

### Untapped potential in prime east side 400m to rail

"Lisden" c.1913, a home steeped in local history and presenting iconic Californian Bungalow architecture, positioned on 1,163sqm (approx) of east side land just 400m (approx) to rail and Lindfield village. The home offers an outstanding opportunity to revitalise for contemporary comfort while honouring the exquisitely intact character. Currently configured for multi-generational use, the home's size, unique layout, and prominent location also offers scope for use as medical rooms, home-based day care, or paid accommodation (STCA). Take a look at this unique property and discover its amazing possibilities.

- Designed by architect Edwin Roy Orchard, very early Californian Bungalow style
- 1,163sqm (approx.) of land, exquisitely intact period features
- Suit use as medical rooms, home day care, B&B, boarding, and more (STCA)
- Multi-generational set-up with two kitchens, mains gas to the property
- Four large living + dining areas, five bedrooms, vast master, four bathrooms
- Home office with outdoor access, study, walk-in storage, attic, sitting room
- Parquet floors, detailed ceilings, original fireplaces, built-in cabinetry

Price:

Contact Agent



**Steven Kourdis**

0402 555 675



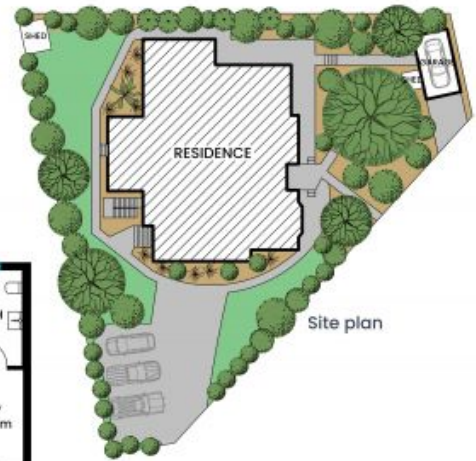
**Adette Cao**

0433 412 196





36 Strickland Avenue  
Lindfield



Internal area: 430m<sup>2</sup>

The site plan and floor plan are not to scale; measurements are indicative and in metres. Bushes and trees are placed for illustration purposes. Plans should not be relied on. Interested parties should make and rely on their own enquiries. All other information provided has been collected from reliable sources but cannot be guaranteed for accuracy.