



35 Pastureland Street Kembla Grange, NSW

5 2 2

### Near new contemporary family home

Nestled in a picturesque estate with sweeping escarpment views and a rural setting this home spans two levels and offers contemporary finishes throughout along with an easy care lifestyle of this sought after estate. Positioned with close proximity to Dapto Mall, cafes and restaurants.

**Price:** \$850 per week  
**Bond:** \$3,400  
**Available Date:** 11/10/2023



**Jake McKinnon**

0430 604 402

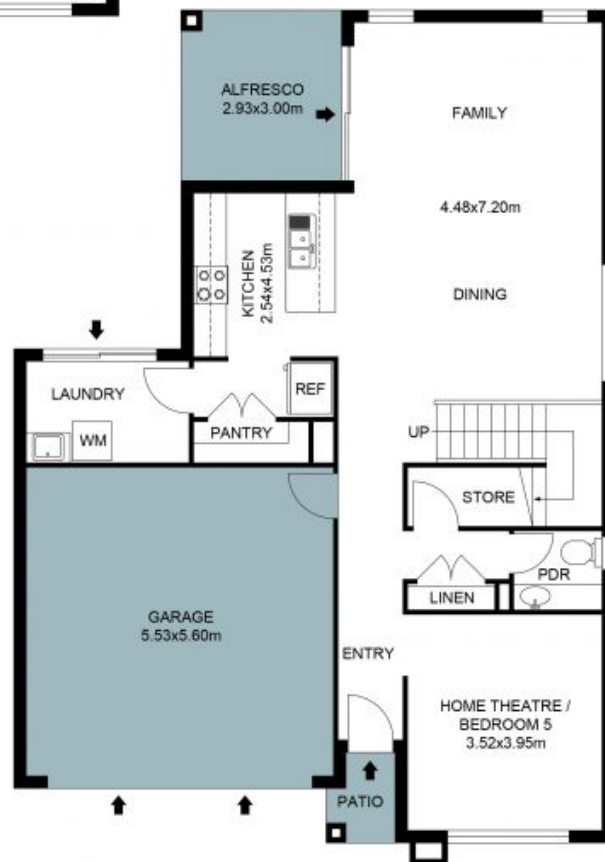


**Leasing Agent Illawarra**

0421 396 635



Upper Floor Plan



Ground Floor Plan

The Floor plan is not to scale; measurements are indicative and in metres.  
 Plans should not be relied on. Interested parties should make and rely on their own enquiries.  
 All other information provided has been collected from reliable sources but cannot be guaranteed for accuracy.