



31 Manthey Crescent Bray Park, QLD

3 2 1

3 Bedroom Family Home

Surprisingly this home has a lot to offer - 3 big bedrooms, ensuite, two large living areas and a large backyard.

Situated in a quiet area in Bray Park, the home is close to great schools, a Coles shopping centre and fantastic transport options.

Features:

- 3 Bedrooms - main with ensuite & walk in robe
- 2 living areas
- 2 split system air cons
- Good sized kitchen
- Dishwasher
- Breakfast bar
- Entertainment area
- Large fenced backyard.

Price: \$530.00 per week pw
Bond: \$2,120
Available Date: 23/10/2023



Nell Weedon

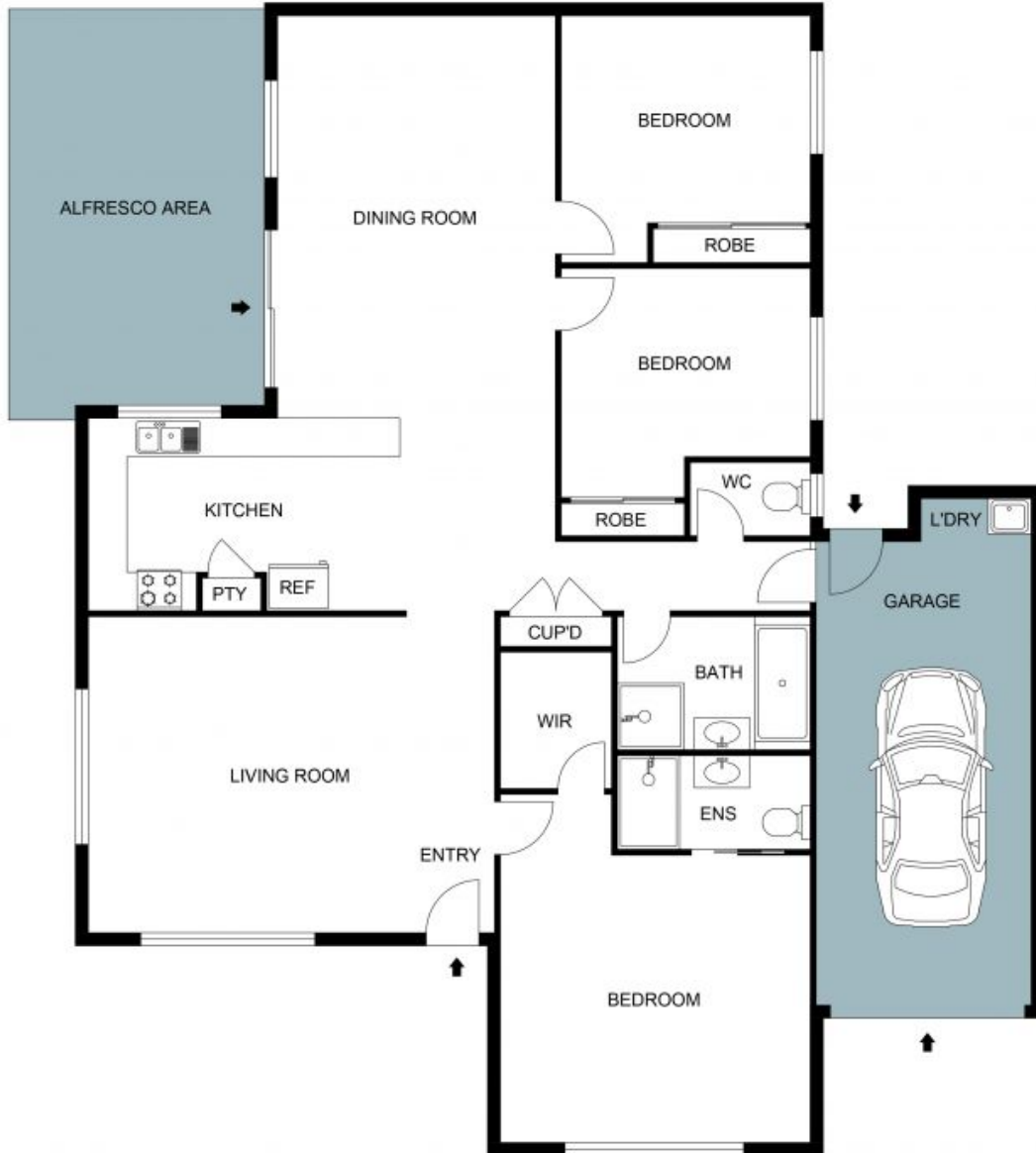
07 3881 2007



Sue Ward

0427 073 434

31 Manthey Crescent
Bray Park QLD 4500



Floor Plan