



36/8 Koorala Street Manly Vale, NSW



**Sold By Eddy Piddington 0414 333 907**

**Price:** \$1,250,000

Peacefully nestled at the back of the resort-like 'Peninsula' security complex with an eastly aspect and tranquil leafy outlook, this phenomenal executive apartment delivers the ultimate luxury lifestyle package. Exceptionally bright and spacious, refreshingly modern and extending to a large eastly facing balcony by the crowning trees, it is only footsteps from Coles supermarket and B-Line city buses.

- Set amid tropical gardens in an exclusive security complex
- Spacious light-filled living space with defined dining area
- Glass sliders open to sunny entertainers' balcony with leafy views
- Open plan kitchen with gas stove and dishwasher
- Spacious bedrooms with built-ins, main with spa ensuite
- Internal laundry, 132sqm of living space, 160sqm on title
- Sparkling heated indoor/outdoor pool, sauna and gymnasium on-site
- Footsteps to Coles, short stroll to Woolworths and Aldi plus cafes and eateries



**Tim Mumford**

0421 942 693



**Eddy Piddington**

0414 333 907

36/8 Koorala Street  
Manly Vale

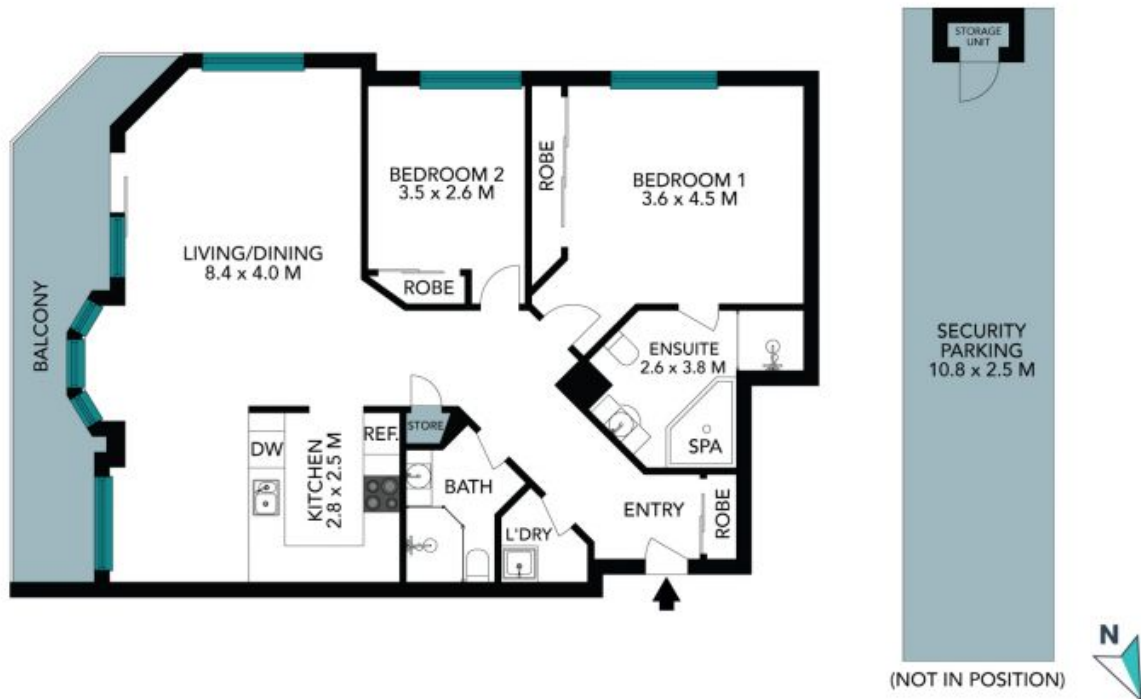


The floor plan is not to scale; measurements are indicative and in metres. All features included in this 3D plan are for inspiration purposes only. This is not an exact replica of the property or the position of exterior elements. Plans should not be relied on. Interested parties should make and rely on their own enquiries.



36/8 Koorala Street  
Manly Vale

STONE



The floor plan is not to scale, measurements are indicative and in metres. Exterior elements are not in position. Plans should not be relied on. Interested parties should make and rely on their own enquiries. All other information provided has been collected from reliable sources but cannot be guaranteed for accuracy.