

18/29 East Crescent Street McMahon's Point, NSW



## Superb apartment with iconic harbour views first time offered in 24 years

Capturing spectacular and iconic harbour views, this apartment is perfectly positioned within a charming, character-filled circa 1920 Art Deco building located on the sought after north-east corner. Featuring direct Harbour Bridge and Opera House views from the main living area and kitchen, and enjoying north facing water views across Lavender Bay from the study, it is sure to appeal to the astute buyer wishing to purchase in one of the world's very best locations.

- Opportunity to enhance and add further value
- Large bedroom with built-in-robies plus separate north facing study/sunroom
- Direct Harbour Bridge and Opera House views captured from the living area
- 2.7m high ceilings; Contemporary bathroom
- Formal entrance hall and separation between living and bedroom zones
- Set in a beautiful and well maintained Art Deco building with secure intercom access
- Common lawn area ideal for outdoor entertaining with spectacular harbour and city views

**Price:** Contact Agent  
**Council Rates:** \$254.00 p/q  
**Water Rates:** \$173.00 p/q  
**Strata Rates:** \$1,407.00 p/q



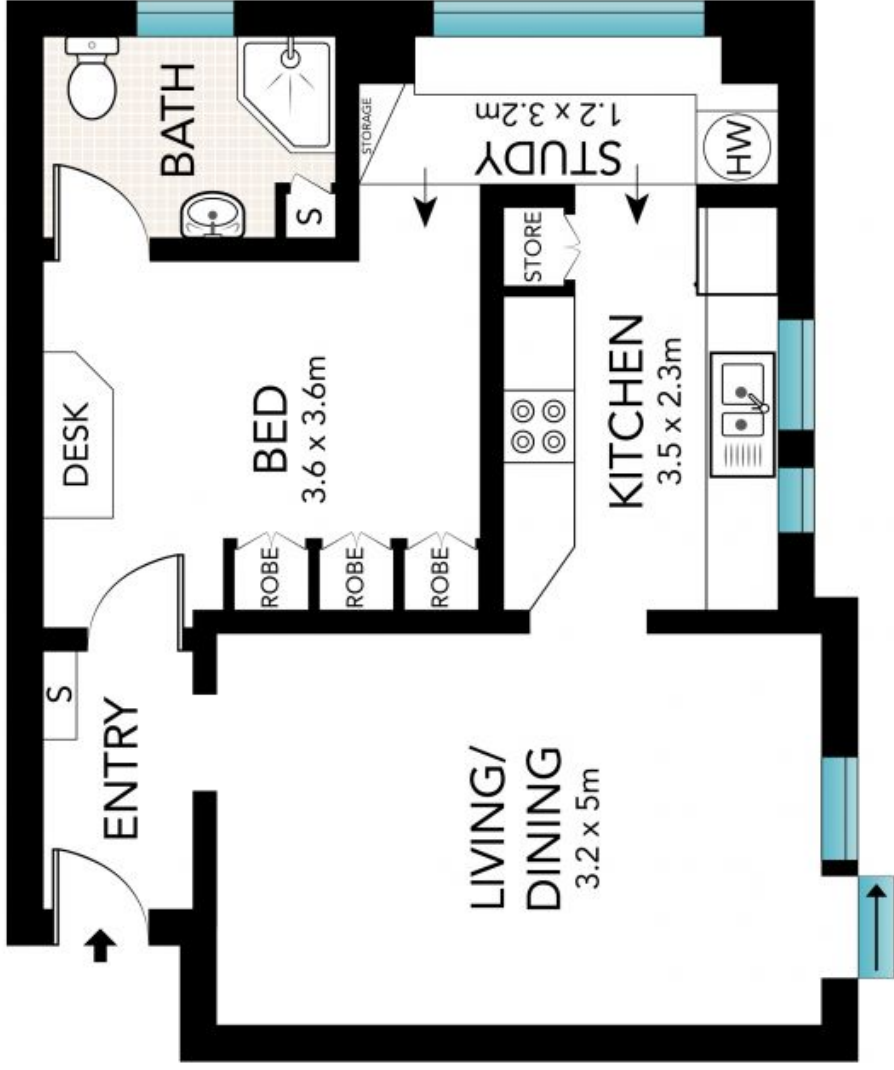
**Annika Bongiorno**

0415 194 152



**Aaron Bongiorno**

0423 621 775



All the information provided has been collected from reliable sources but cannot be guaranteed for accuracy. Installer persons should rely on their own enquiries. All dimensions are approximate and indicate only.

18/29 East Crescent Street, McMahons Point

