



145 Chetwynd Road Whiteheads Creek, VIC

3

1

4

House on the hill

If you're looking for the peace and quiet of secluded, country living then look no further. Enjoy your private 39-acre property with views of the rolling hills and dams from your loungeroom.

Features:?

- 3 bedrooms (main with WIR)
- Separate living and dining
- Kitchen overlooking landscaped gardens
- Combustion wood fire + reverse cycle split system
- Large 6 x 12m shed/workshop on concrete slab + power
- Two double carports
- Four dams
- Three water tanks

Rental Appraisal: \$500 - \$550pw

Price: \$800,000-\$850,000
Council Rates: \$2,300.00/year (approx)



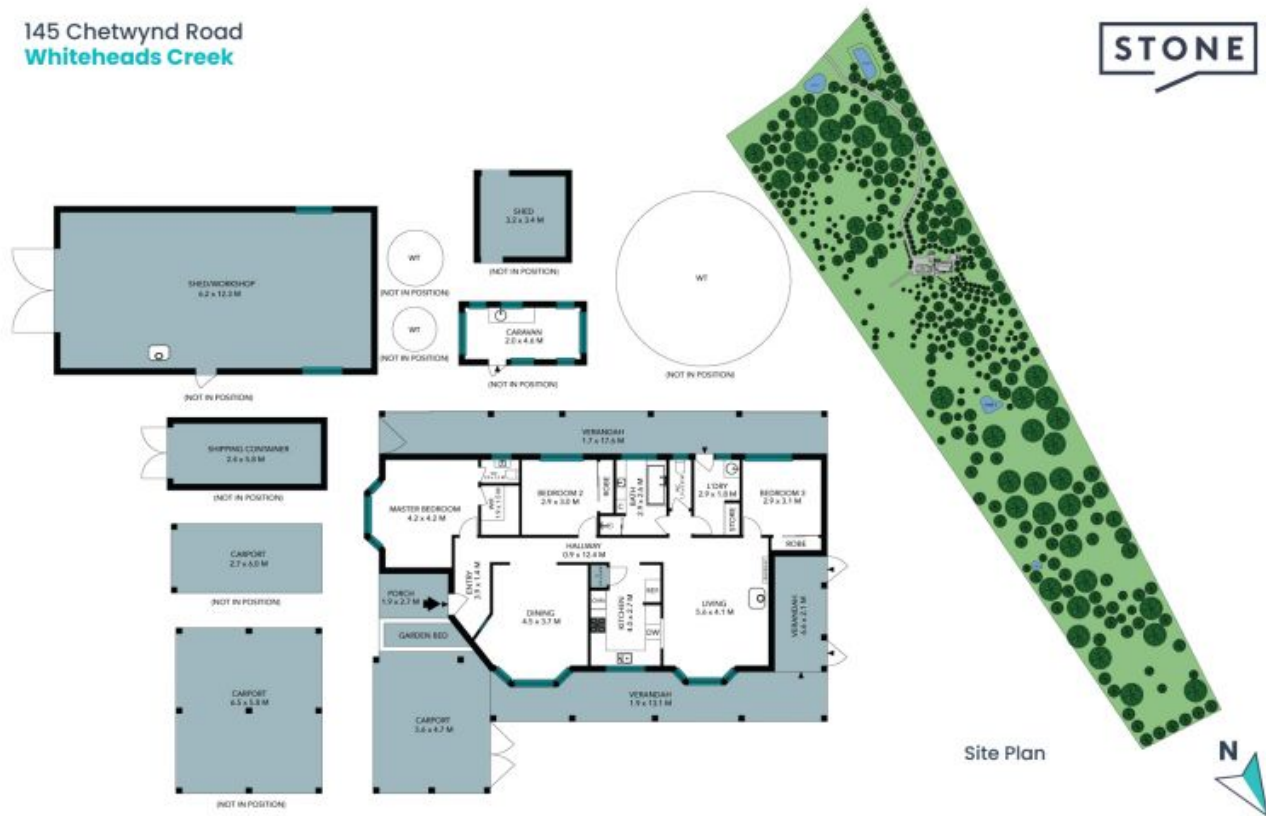
Dean Zammit

0405 140 704



Teleisha Godfrey

0407 529 378



The site plan and floor plan are not to scale; measurements are indicative and in metres. Bushes and trees are placed for illustration purposes. Plans should not be relied on. Interested parties should make and rely on their own enquiries. All other information provided has been collected from reliable sources but cannot be guaranteed for accuracy.

145 Chetwynd Road
Whiteheads Creek

STONE



The floor plan is not to scale; measurements are indicative and in metres. All features included in this 3D plan are for inspiration purposes only. This is not an exact replica of the property or the position of exterior elements. Plans should not be relied on. Interested parties should make and rely on their own enquiries.