

6 Soren Larsen Crescent Boambee East, NSW

3 1 1

"Little Beauty"

This is a fabulous 3 bedroom home that is perfect for retirees, first home buyers or investors. The owners have been busy with completing a stunning new kitchen, flooring and gardens. It is very light & airy and features a fabulous undercover outdoor entertaining area, a huge level, fully fenced backyard with rear access & ample room for a swimming pool. The lounge room includes a reverse cycle air conditioner and there is internal access to the single lock up garage. Set on a 710sqm block backing a reserve and in a quiet neighbourhood, it is not far from local shopping centres, schools & the beach.

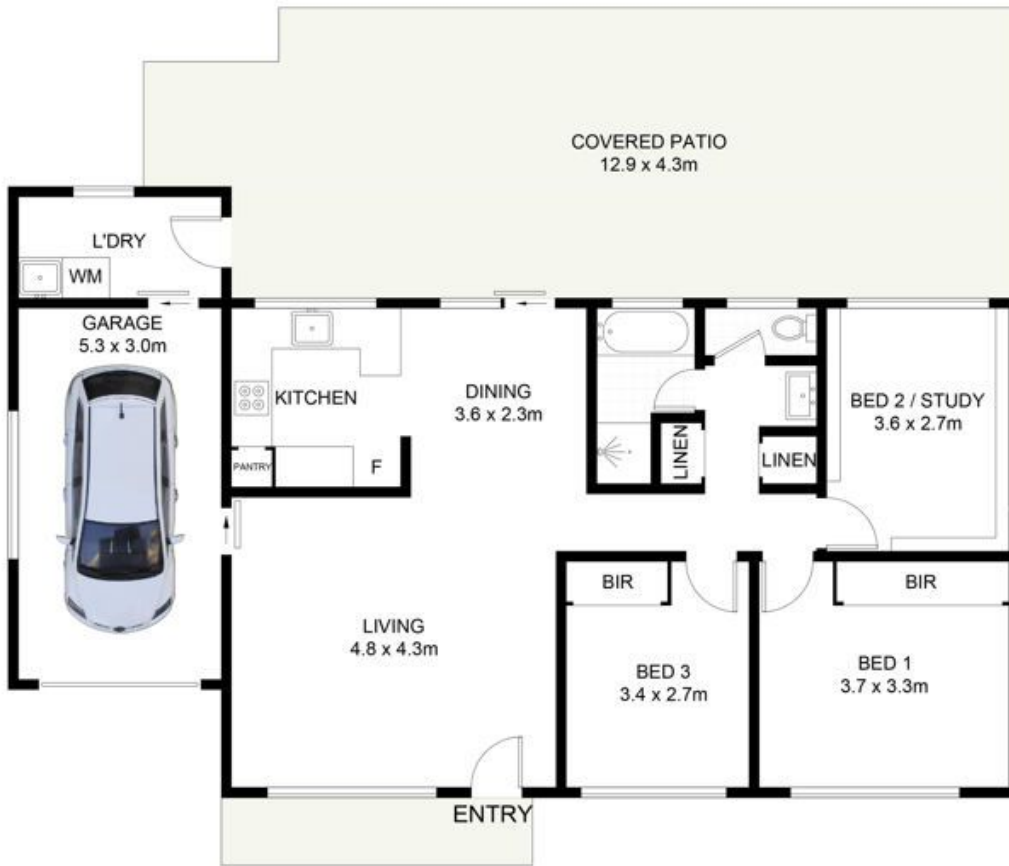
Rates \$3,042pa approx.

Price: \$675,000-\$695,000
Council Rates: \$3,042.00/year (approx)



Yvette Ward

0403 602 544



florent & munday



6 Soren Larsen Crescent, Boambee East, NSW 2452

DISCLAIMER: PLANS SHOWN ARE FOR PRESENTATION PURPOSES AND ARE NOT PART OF ANY LEGAL DOCUMENT. ALL MEASUREMENTS AND FIGURES ARE APPROXIMATE.