



95 Mimiwali Drive BONVILLE, NSW

4 2 2

"Elevated Brand New Home"

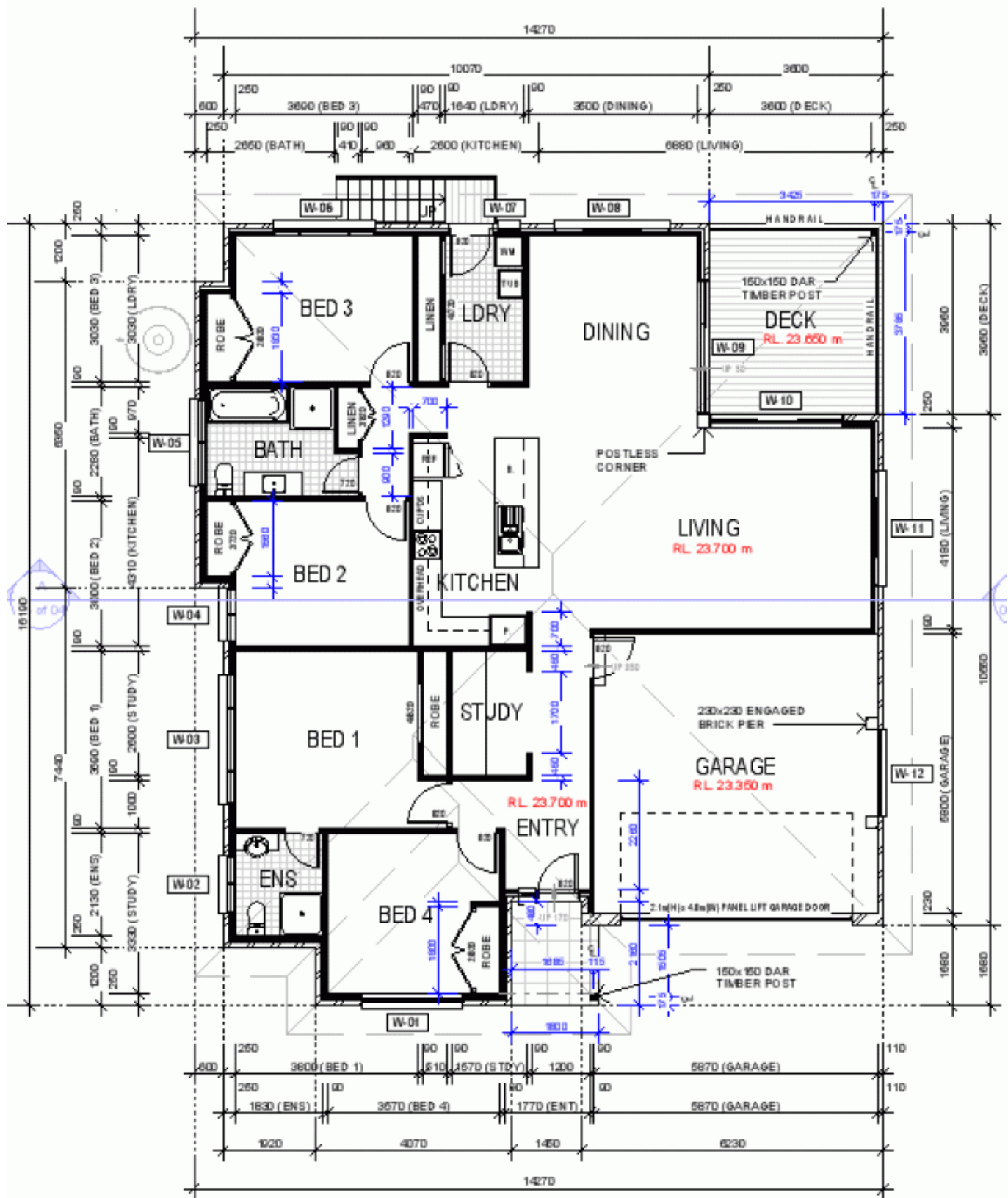
Situated in the "Sawtell Ridge Estate" is this four bedroom + study home with elevated views. Features include open plan living, modern kitchen with stainless steel appliances & island bench, remote double lockup garage and covered entertaining deck. Situated only a short drive to Sawtell's main street & beautiful beaches.

Price: \$549,000



Shane Brooks

0403 266 707



FLOOR PLAN

SCALE 1 : 100

NOTE:
 PROVIDE SMOKE DETECTORS AS
 PER BCA VOL.2 3.7.2 AND AS 3786.