



9 Moseley Drive BOAMBEE EAST, NSW

3 

1 

2 

"Low Maintenance Entertainer"

This gorgeous home has been very well cared for and is in a great elevated location. It features 3 bedrooms, open plan lounge & dining area with reverse cycle air conditioning and a light & bright kitchen with dishwasher. Outdoor entertaining is well taken care of with a massive covered rear entertaining area, a separate drying area and even a workshop/storage shed. This home is ideal for those looking to downsize, jump into the market or as an investment. Situated close to schools, shops & public transport you wouldn't want to miss this one.

Price: \$389,000

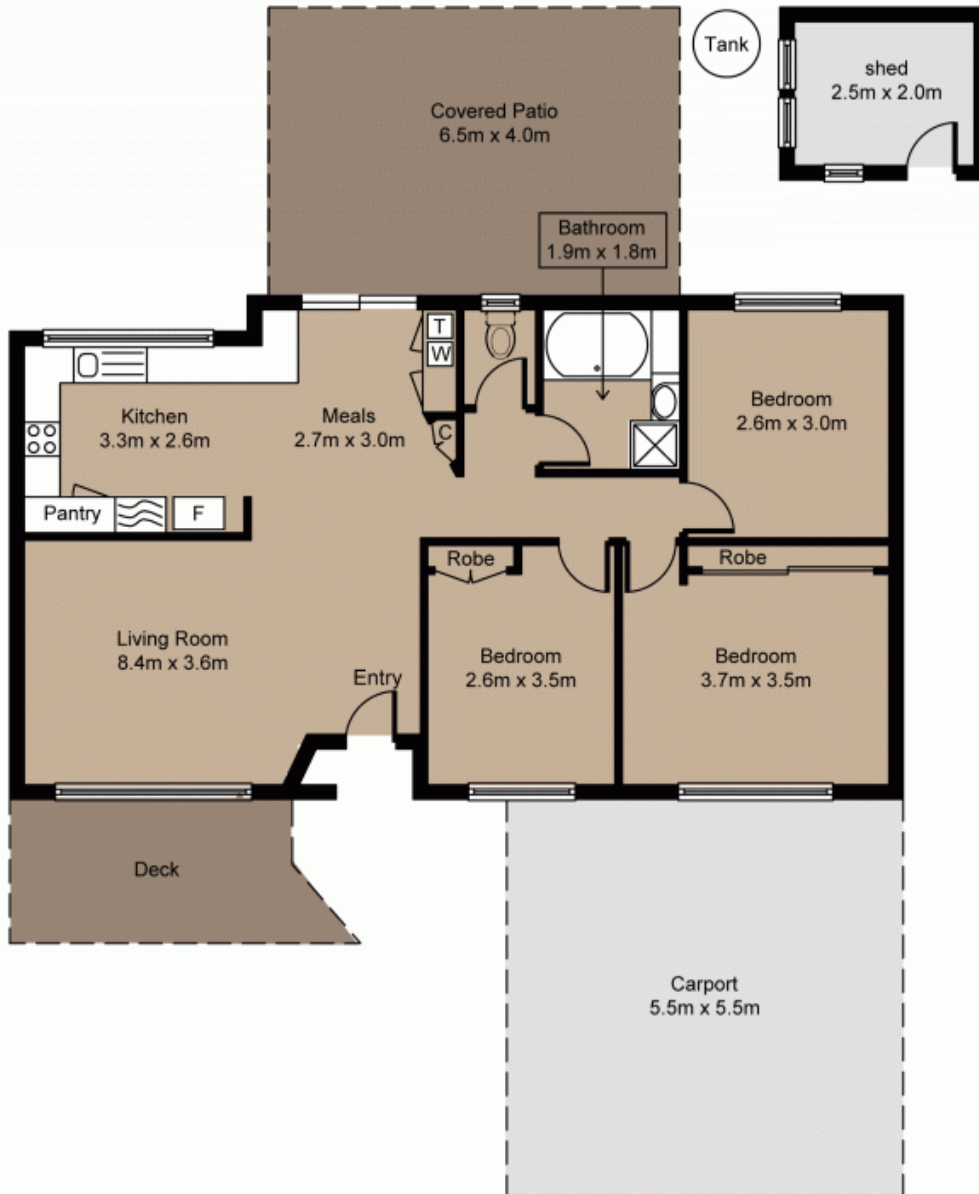


Luke Wenban

0418 165 979

9 Moseley Drive, Boambee East

Living Area : 81m²
Rear Patio Area : 26m²
Total Living Area: 107m²



florent & munday

Whilst every attempt has been made to ensure the accuracy of the floor plan contained here, measurements of doors, windows, rooms and any other items are approximate and no responsibility is taken for any error, omission, or mis-statement. This plan is for illustrative purposes only and should be used as such by any prospective buyer.

www.rocketshots.com.au