



8/15A Lady Belmore Drive BOAMBEE EAST, NSW

3 

1 

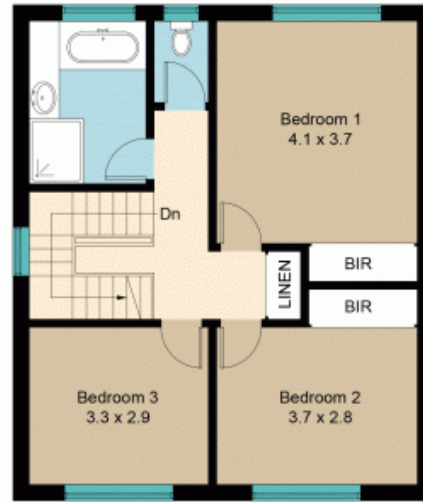
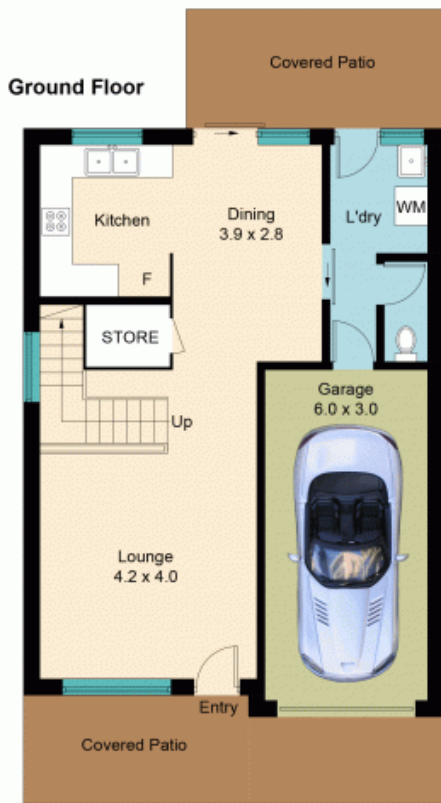
1 

Spacious 3 Bedroom Townhouse - Large Backyard

What a find! This spacious townhouse is perfect for those just starting out or looking for a great investment property. It is light and bright and features 3 large bedrooms upstairs, bathroom complete with floor to ceiling tiles and separate wc. Downstairs is the lounge, dining and good size kitchen with ample cupboard space and a second toilet off the laundry. It also has a large fully fenced backyard, perfect for kids or pets, and a single lockup garage with internal access. Expected to rent for approx. \$340-\$360 per week. Strata levies approx. \$404 per quarter.

Price: \$359,500

Stone Real Estate -
Head Office



First Floor

8/15A Lady Belmore Drive, Boambee East, NSW 2452

Please note: All stated dimensions are approximate only.
Particulars given are of general information only and do not constitute any representation on the part of the vendor or agent.

