



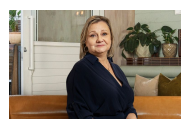
4201/1 Nield Avenue Greenwich, NSW



Spacious & Stylish - Pets Considered

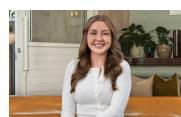
Set at the rear of Auralia, a leafy & exclusive residential complex featuring beautifully designed interiors & exteriors.

Price: \$650 pw
Available Date: 21/10/2023



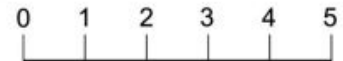
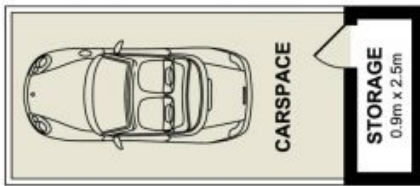
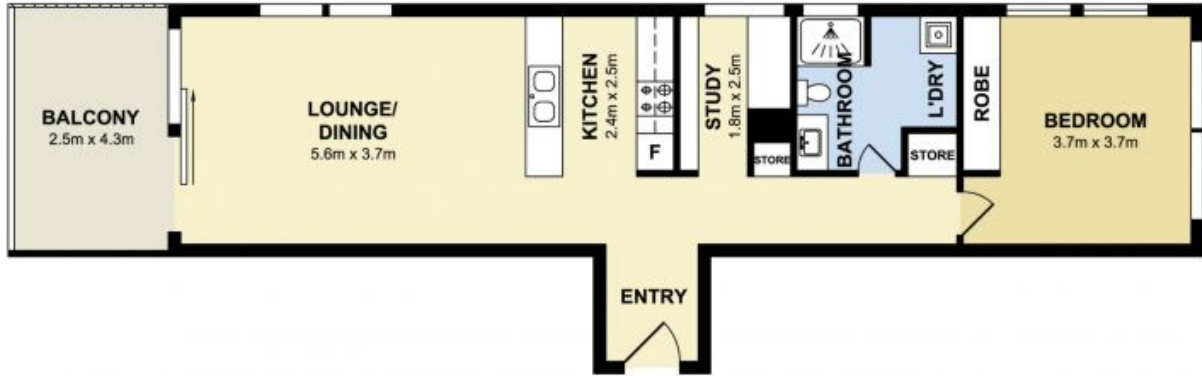
Diane Shipley

0413 137 874



Jaydn Frintzilas

0468 998 294



4201/1 Nield Avenue, Greenwich

Measurements are approximate. Not to scale. Illustrative purposes only.
Open2view does not take any responsibility for any information supplied.

